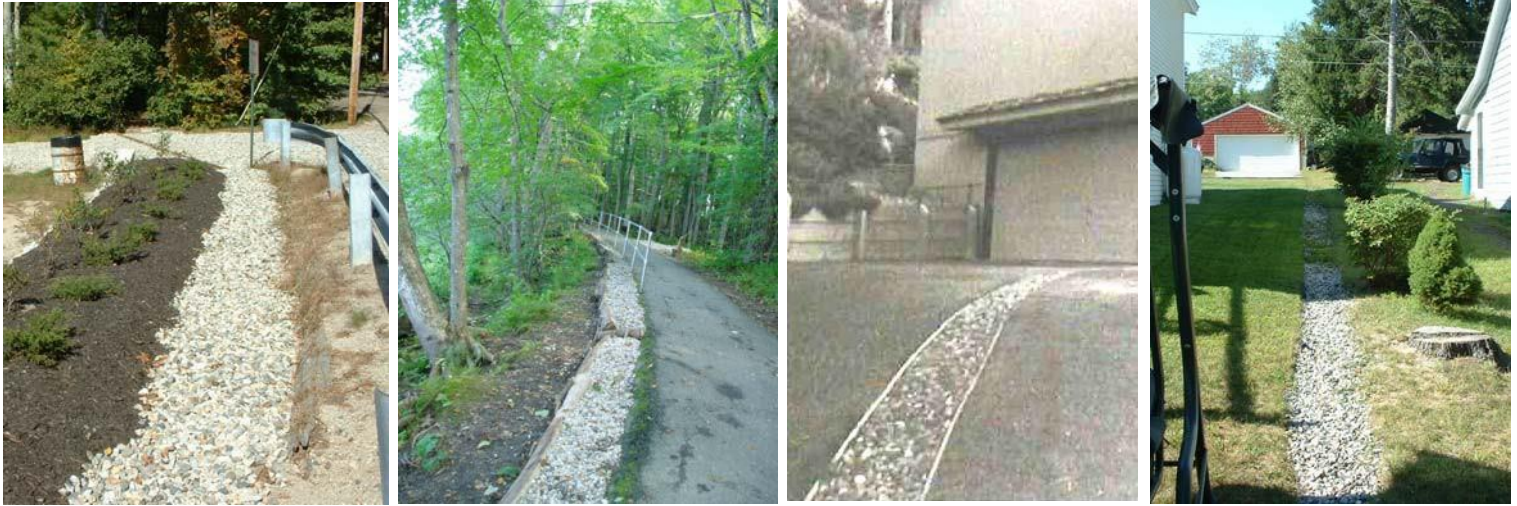




# INFILTRATION TRENCH

managing runoff from rooftops and paved areas

Land Use Department  
20 East High St.  
860-267-7450  
www.easthamptonct.gov

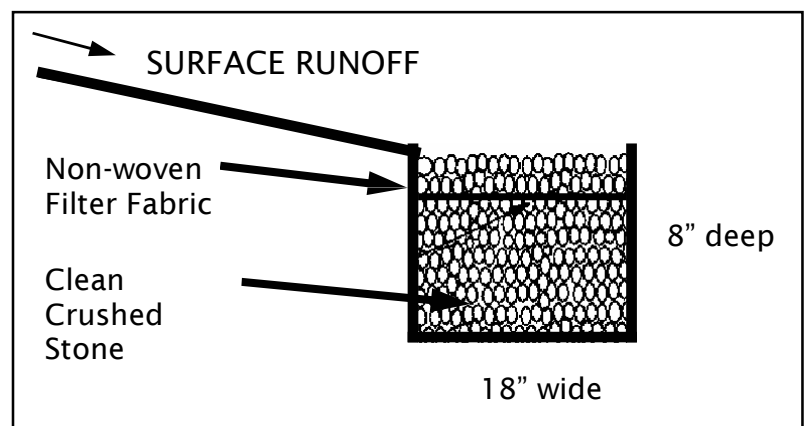


**Purpose:** Infiltration trenches collect and infiltrate runoff from paved driveways, rooftops and other areas. Infiltration trenches work best in well-drained soils like sands and gravels. Due to their relatively small size, they can effectively handle only smaller rainfall events. Infiltration trenches are not well suited for areas that receive large amounts of sediment (e.g., gravel driveways) as they will fill in quickly.

**Installation:** Dig a trench that is 18" wide and at least 8" deep. Make sure to dispose of the soil in a flat area where it cannot be washed into the lake. The front and sides of the trench may be edged with stone or lumber to hold the stones in place.

Extend the life of the infiltration trench by lining the sides with non-woven geotextile fabric. Fill to within 3" of the ground level with  $\frac{1}{2}$ " to  $1\frac{1}{2}$ " crushed stone. Fold a flap of non-woven geotextile fabric over the top of the trench and top off with additional stone.

**Materials:** Crushed stone can be purchased at your local gravel pit. Contact your local Soil and Water Conservation District for suppliers of non-woven geotextile fabric. Other geotextiles, including landscaping weed barrier, can be substituted for smaller projects.



**Maintenance:** To maintain these structures, periodically remove accumulated debris and weeds from the surface. Non-woven geotextile fabric will extend the life of these structures, however, they will eventually clog over time and the stone will need to be removed and washed to clean out the accumulated sediment and debris.