

LOCATION MAP
SCALE: 1"=1000'

STUDY AREA = 10 Acres of 10.7 Ac Watershed

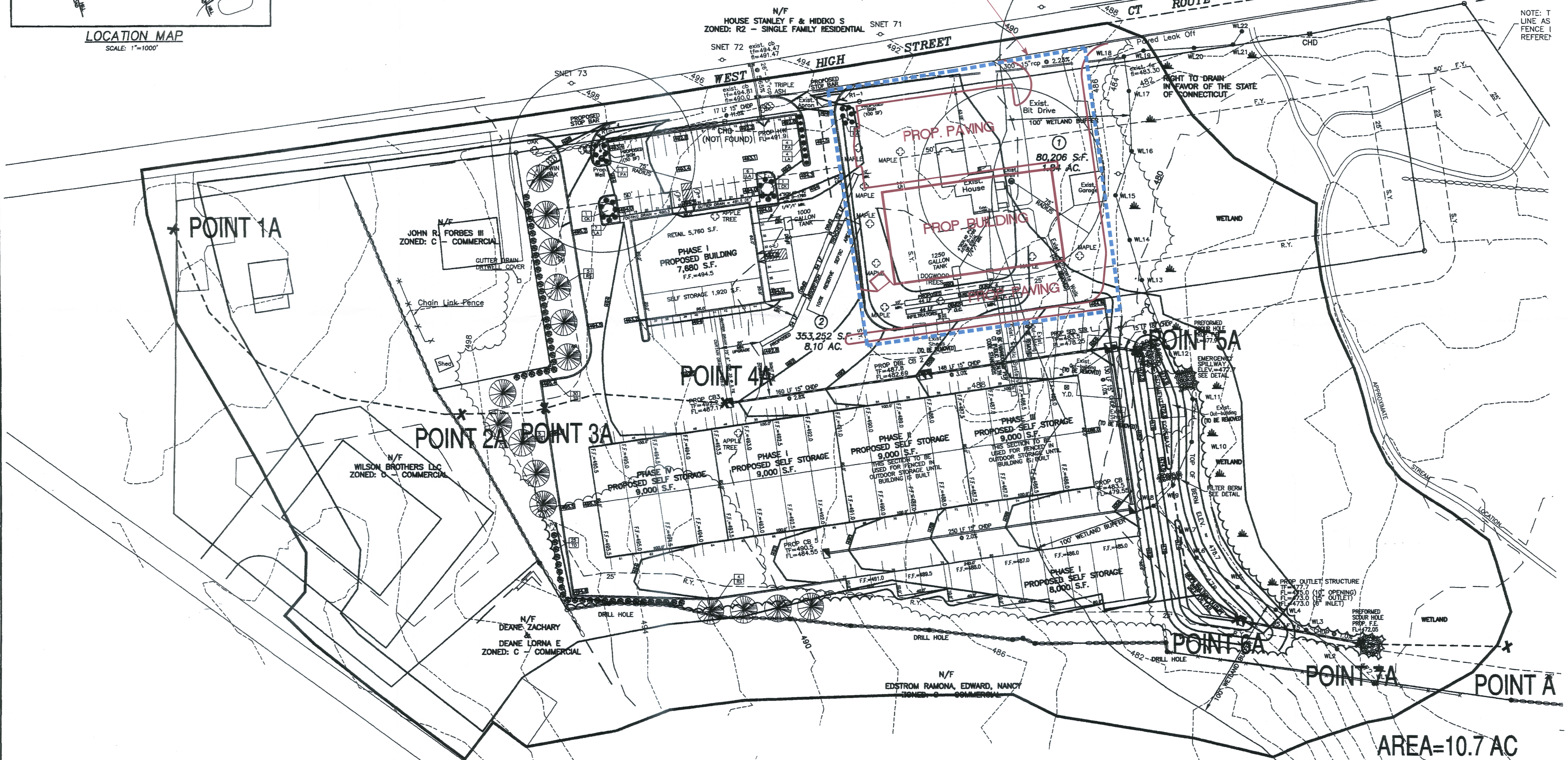
Existing Coverage

Buildings (House/ Garage) = 0.06 Ac
Pavements = 0.15 Ac
Lawn/ Landscape = 0.79 Ac

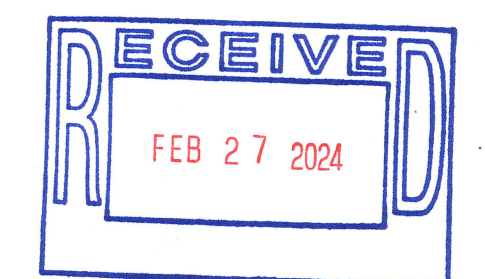
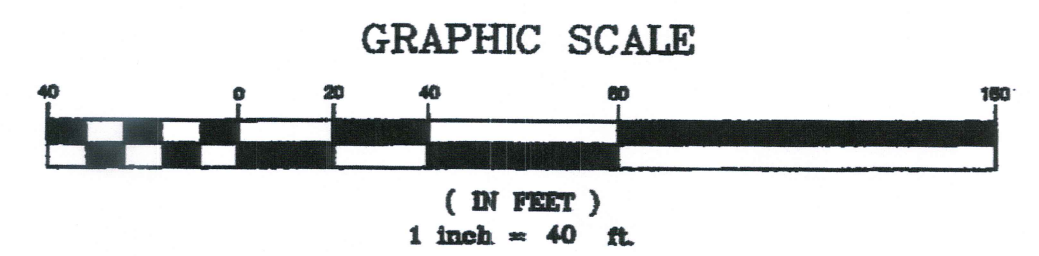
Proposed Coverage

Building = 0.24 Ac
Pavements = 0.52 Ac
Lawn/ Landscape = 0.24 Ac

10 Ac STUDY AREA OF DEVELOPMENT



NOTE: T LINE AS FENCE I REFERE



ROBERT V. BALTRAMATIS, P.E.
27 TAMMY HILL ROAD
WALLINGFORD, CONN. 06492
(203)915-8301
baltrava@ol.com

PROPOSED WATERSHED MAP
PREPARED FOR
WEST HIGH ENTERPRISES, LLC
EAST HAMPTON, CONN.

CK. BY:
DRW. BY:
DATE: FEB. 2024
SCALE: 1" = 40'
SHEET 1 OF 1
MAP NO. WS-1

AREA=10.7 AC