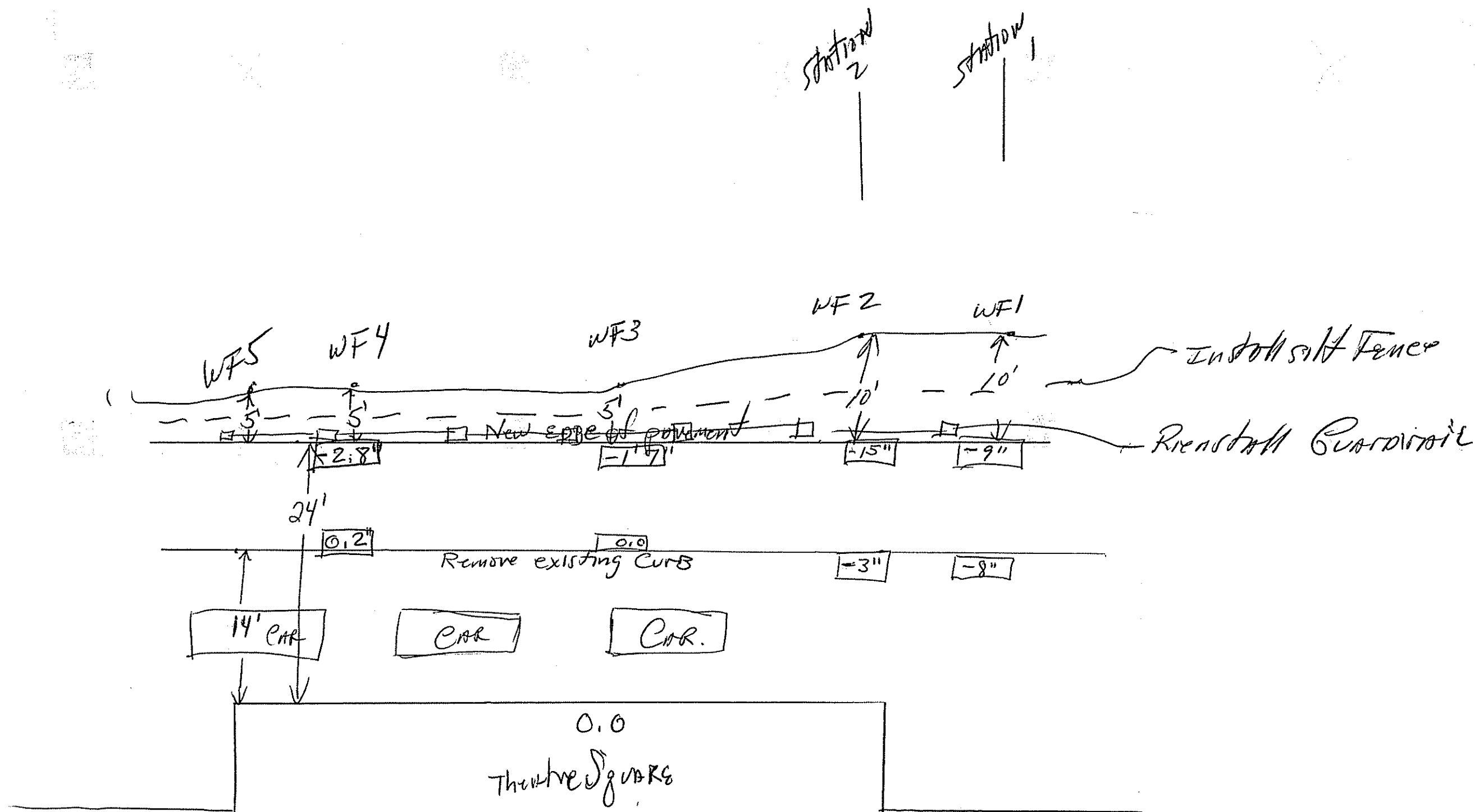
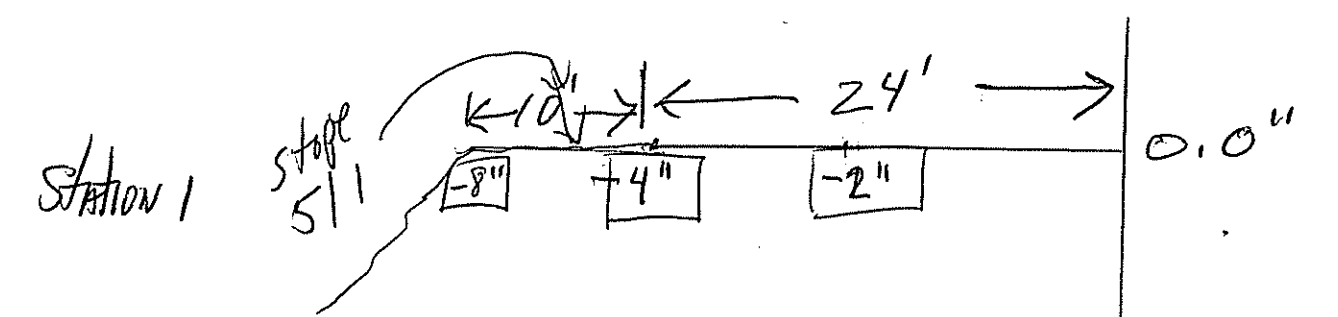
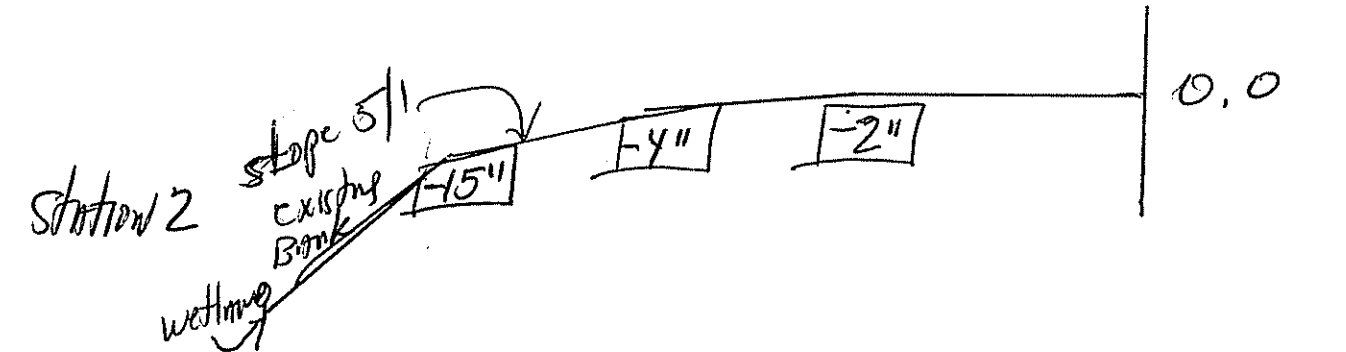
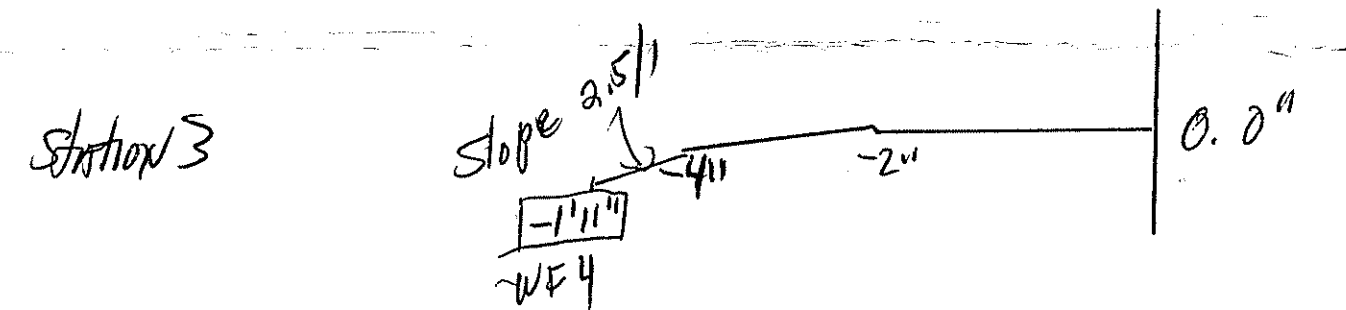
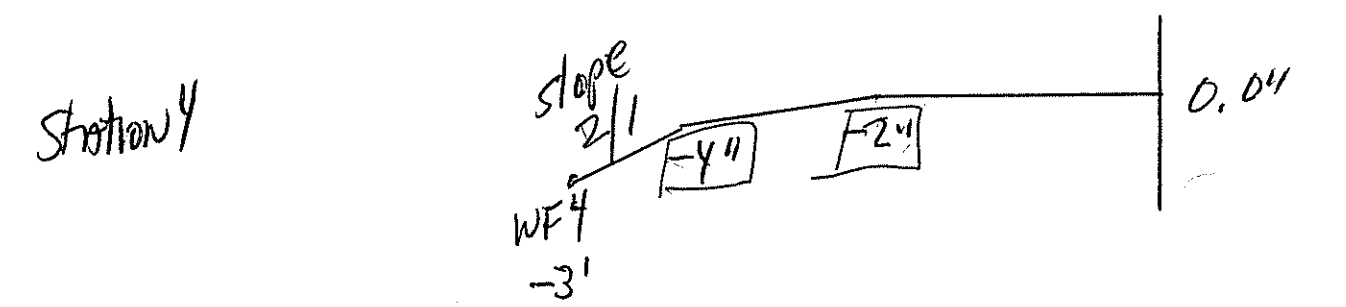
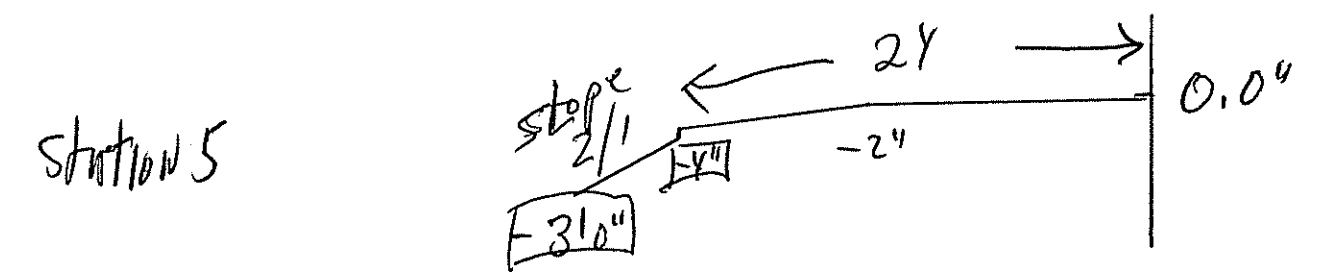
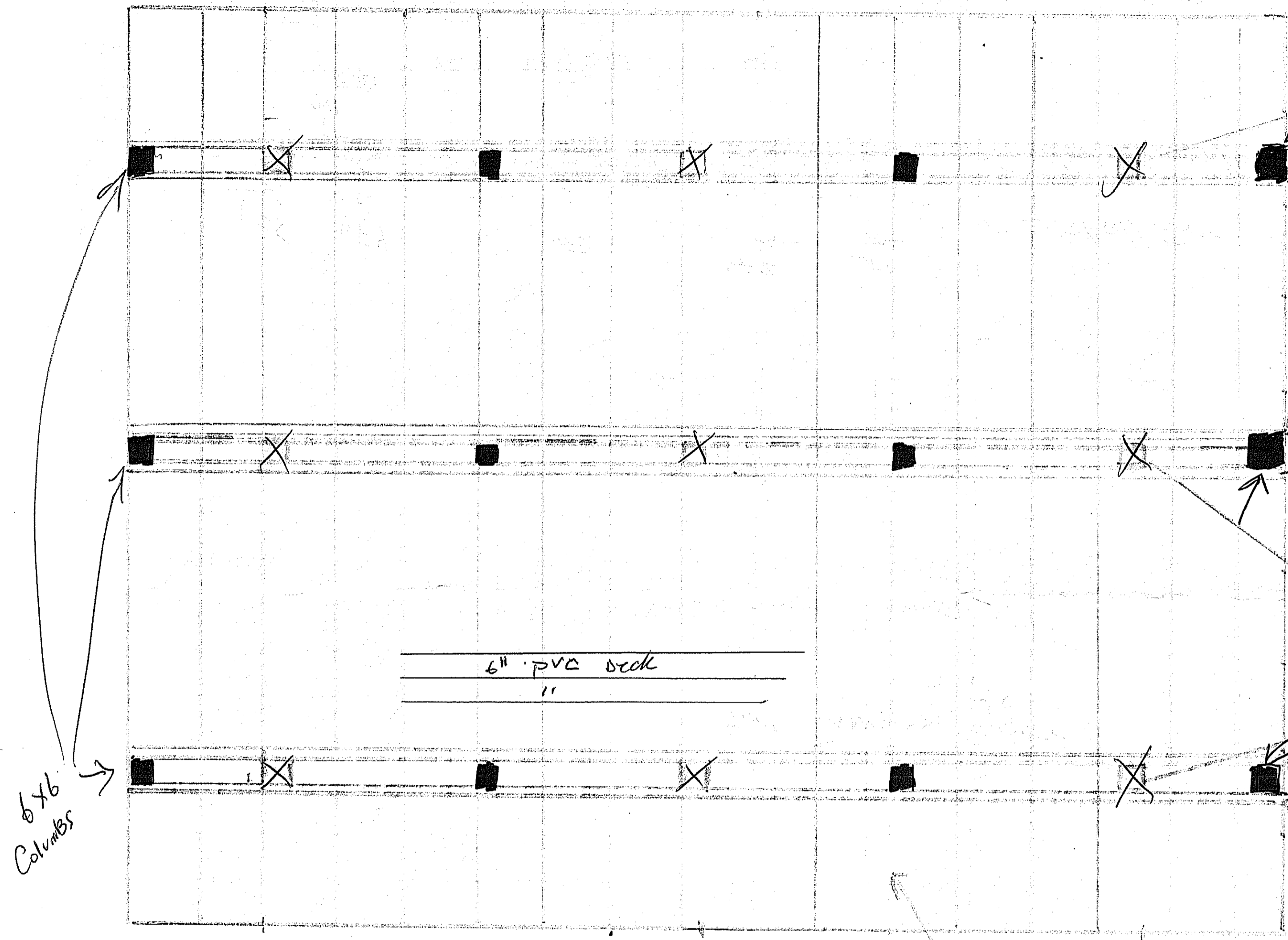


# Back Driveway Bypass





6x6  
Columns

6" PVC Deck  
"

25'

2x12 JOISTS

6x6 Posts

2x12 BEAMS

6x6 Posts

2x12 BEAMS

RAILING PER CODE

42" Rail

4" Max Spacing

42" Rail

2x12 JOIST

match Grade

GRADE

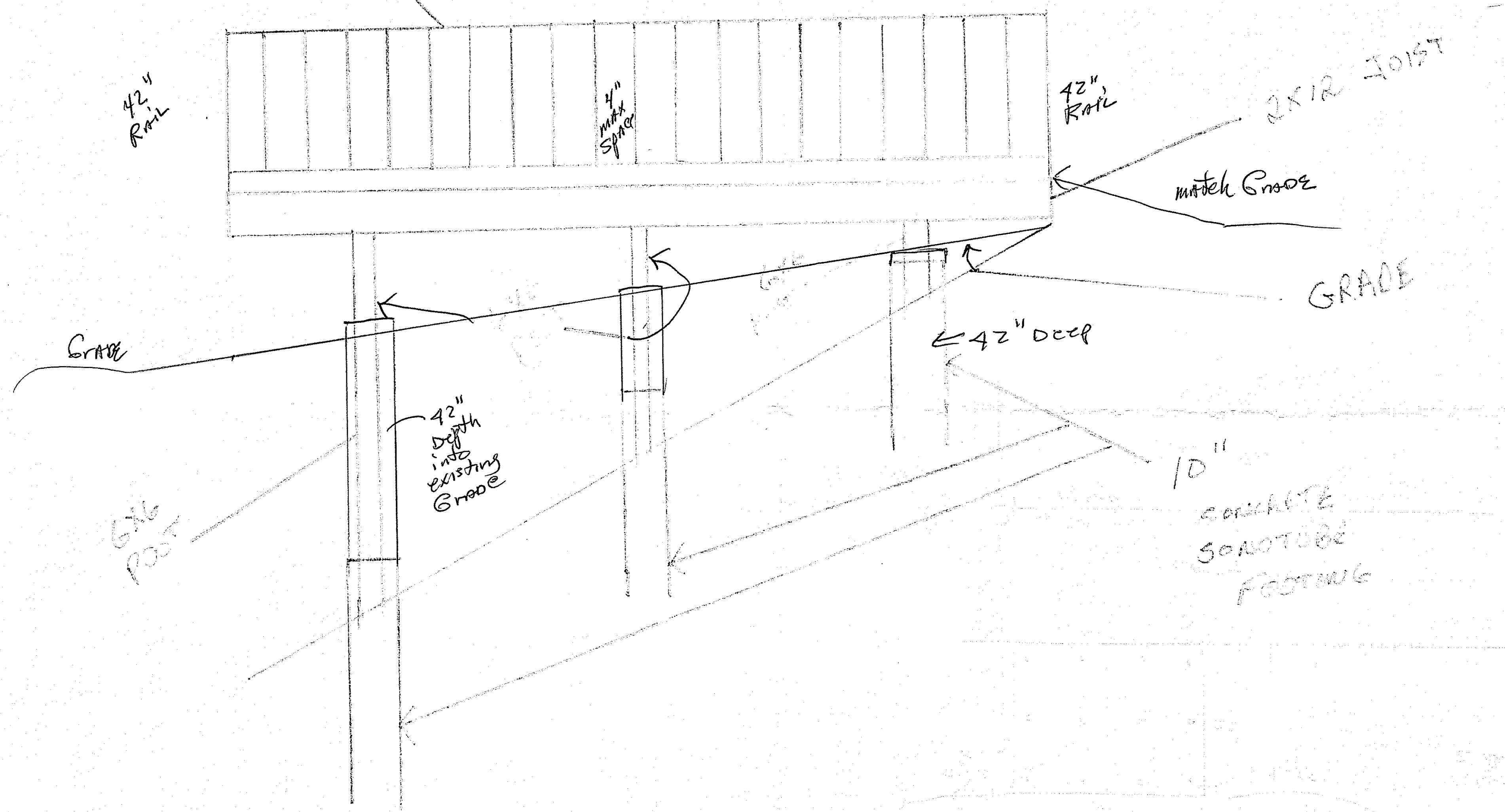
Grade

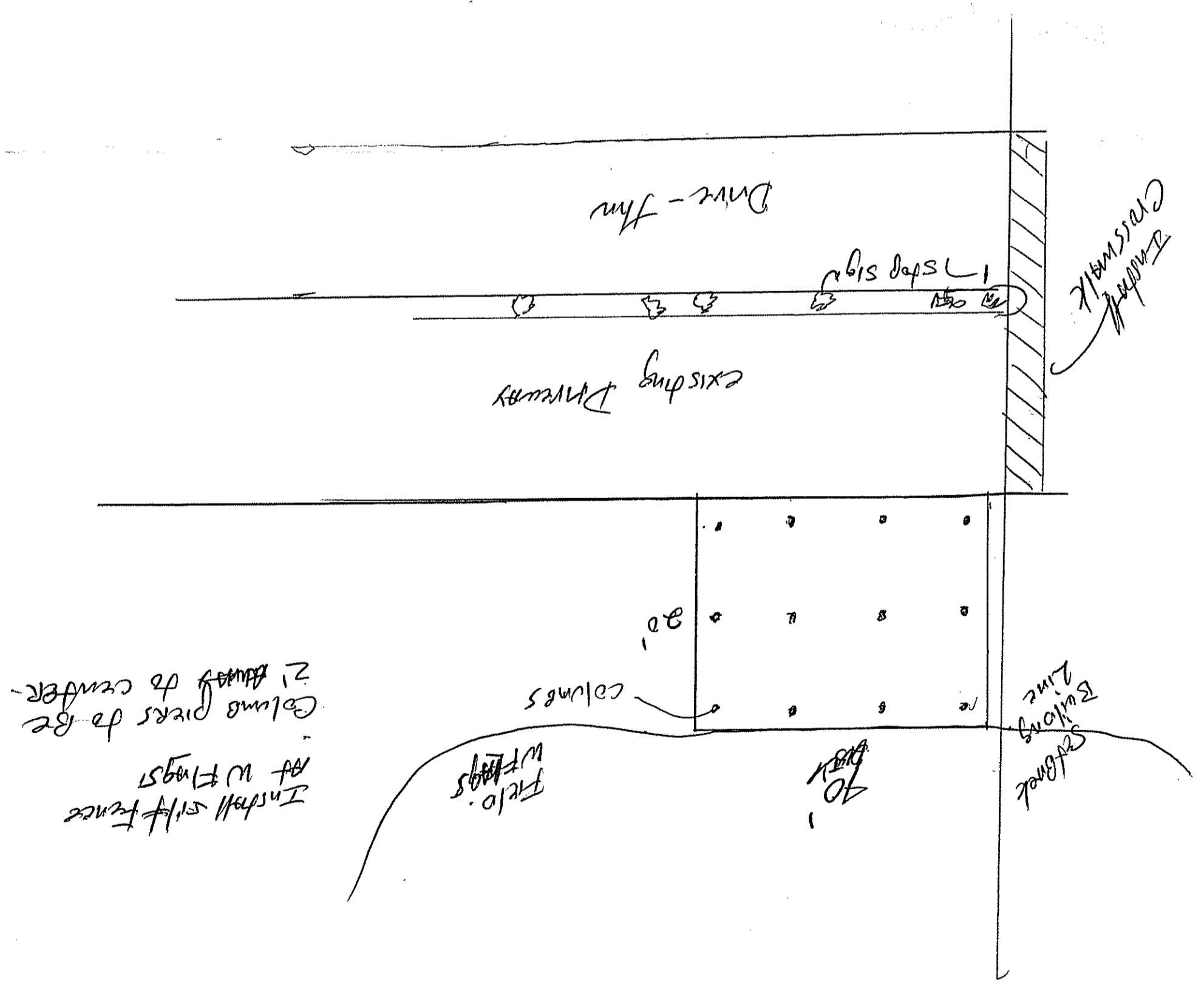
42" deep

42" depth into existing Grade

6x6 POST

10" concrete SONOTUBE FOOTING



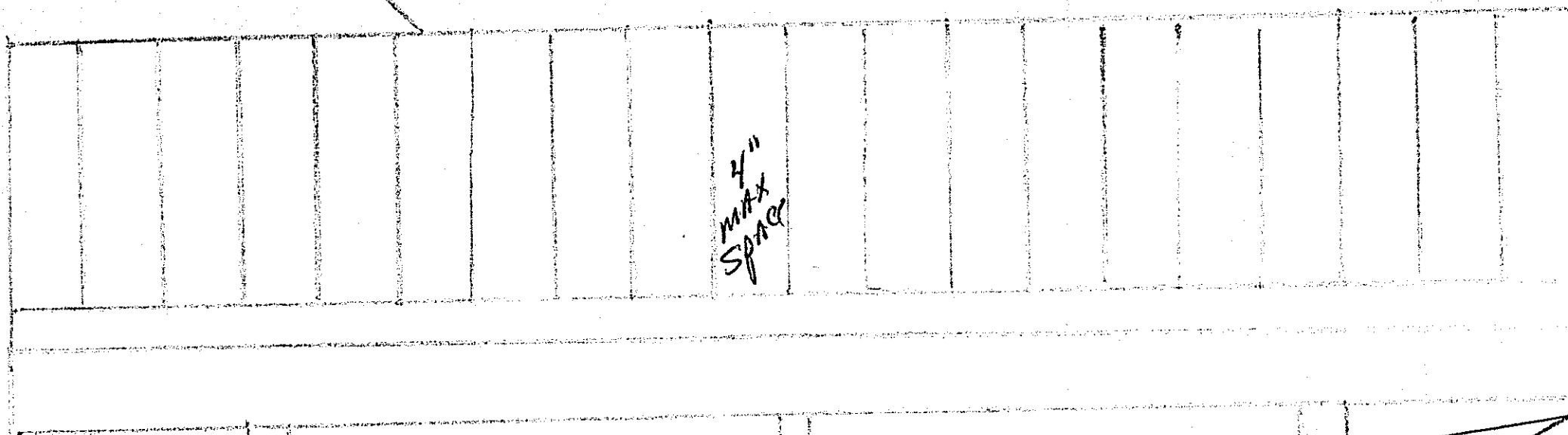


1" = 10'

These were  
Deck 20' x 25'  
Composite wood deck

RAILING PER CODE

42" Rail



4" MAX SPAC

42" Rail

2x12 JOIST

match Groove

GRADE

42" deep

42" depth into existing Groove

10" concrete SONOTUBE FOOTING

GRADE

6x6 POST

