

Project No.	09027.03
Drawn By:	JCE
Checked By:	DLN
Scale	1" = 40'
Sheet No.	1 of 1
Date	11/19/2009



PZC
0029

PLAN SHOWING
PUBLIC WATER
SUPPLY
PROTECTIVE
SANITARY
EASEMENT IN
FAVOR OF THE
TOWN OF EAST
HAMPTON
AT OAKUM
DOCK ROAD
EAST HAMPTON
CONNECTICUT

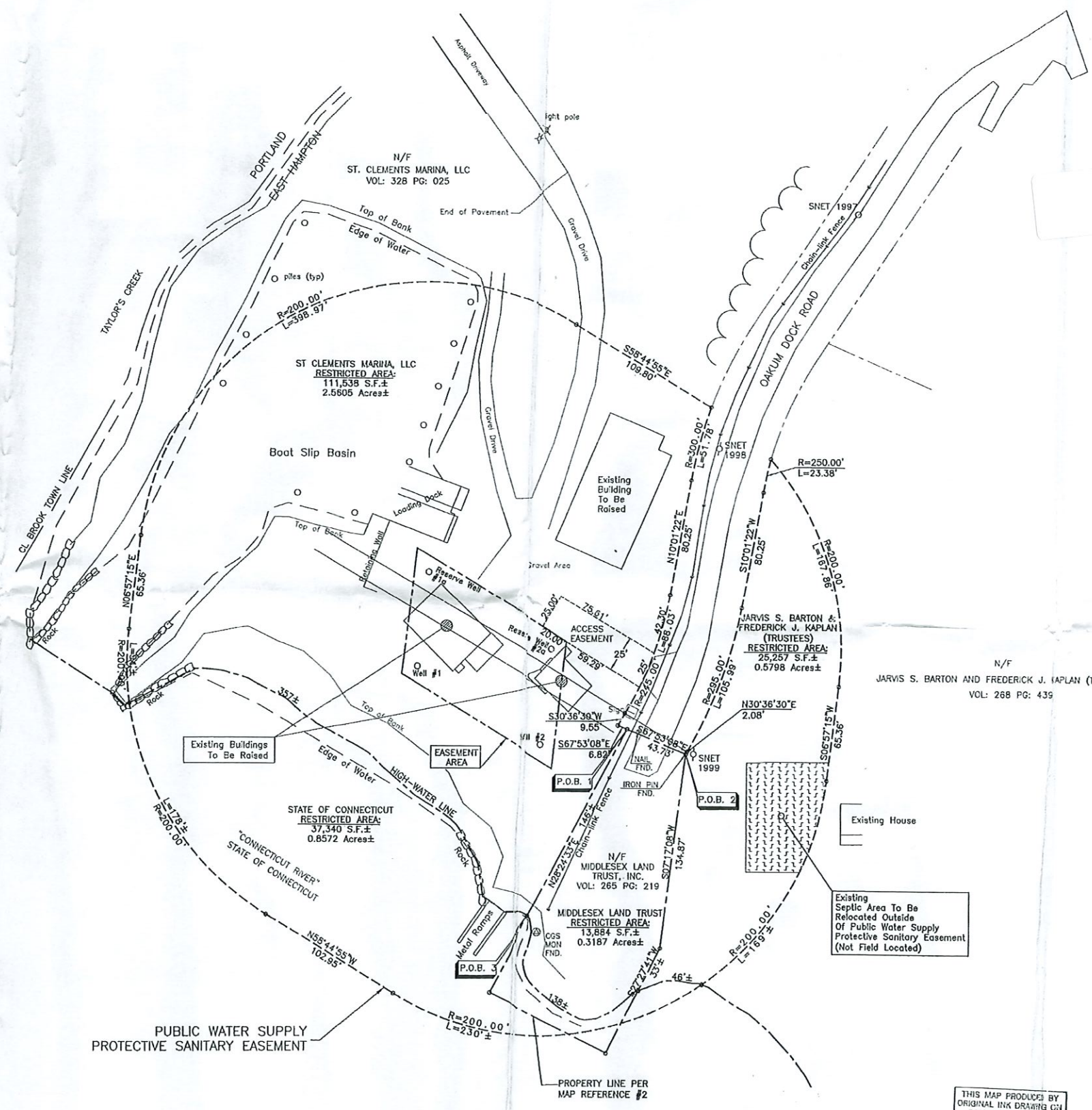
*Read in field
April 9, 2010 10:45 AM
David L. Nafis*

Doc ID: 0012760001 Type: MAP
PK 76 PK 44
Received for Record at East Hampton, CT
On 04/03/2010 At 10:45:21 AM

MAP REFERENCE:
1. "PLAN SHOWING PROPERTY AT 49 OAKUM DOCK ROAD, EAST HAMPTON, CONNECTICUT, PUBLIC WATER SUPPLY PROTECTIVE SANITARY EASEMENT", SCALE 1" = 40', DATED 7/01/2009, BY BLUE RIVER ENGINEERING, LLC, 547 MAIN STREET, SUITE 5, MIDDLETOWN, CT 06457.
2. "PLAN OF LAND OF THE MIDDLESEX LAND TRUST, INC., OAKUM DOCK PRESERVE, OAKUM DOCK ROAD ON THE CONNECTICUT RIVER, EAST HAMPTON, CONNECTICUT, BOUNDARY AND ENCROACHMENT SURVEY", SCALE 1" = 20', DATED JULY 31, 2008, BY DOUGLAS BONOFF, CT L.S. #17381.

SURVEY NOTES:
1. This survey and map have been prepared in accordance with Sections 20-300b-1 thru 20-300b-20 of the Regulations of Connecticut State Agencies - "Minimum Standards for Surveys and Maps in the State of Connecticut" as endorsed by the Connecticut Association of Land Surveyors, Inc. It is a EASEMENT MAP and DATA ACCUMULATION PLAN based on a DEPENDENT RESURVEY conforming to Horizontal Accuracy Class "A-2" and is intended to be used for an Easement Map.
2. This is not a boundary opinion. Boundaries depicted on this plan are from map references.

PUBLIC WATER SUPPLY
PROTECTIVE SANITARY EASEMENT



LEGEND:

PROPERTY LINE
EASEMENT
PROTECTIVE EASEMENT
ACCESS EASEMENT
FENCE LINE
UTILITY POLE

RECEIVED
MAY 31 2010
Bldg. Dept.



Blue River Engineering, LLC
547 Main Street, Suite 5
Middletown, CT 06457
(860) 467-4469 office
(860) 467-4470 fax

THIS MAP PRODUCED BY
ORIGINAL INK DRAWING ON
POLY FILM OR LITHO
NAFIS & YOUNG ENGINEERS, INC.
1335 MIDDLETOWN AVE.
NORTHFORD, CT 06412



Scale 1" = 40'



NAFIS & YOUNG
ENGINEERS, INC.
1335 Middletown Avenue
Northford, Connecticut 06472
Phone: (203) 484-2793
Fax: (203) 484-7343
Email: njyoung@nafisandyoung.com

TO MY KNOWLEDGE AND BELIEF, THIS MAP IS
SUBSTANTIALLY CORRECT AS NOTED HEREON.
David L. Nafis
DAVID L. NAFIS, L.S. #22924