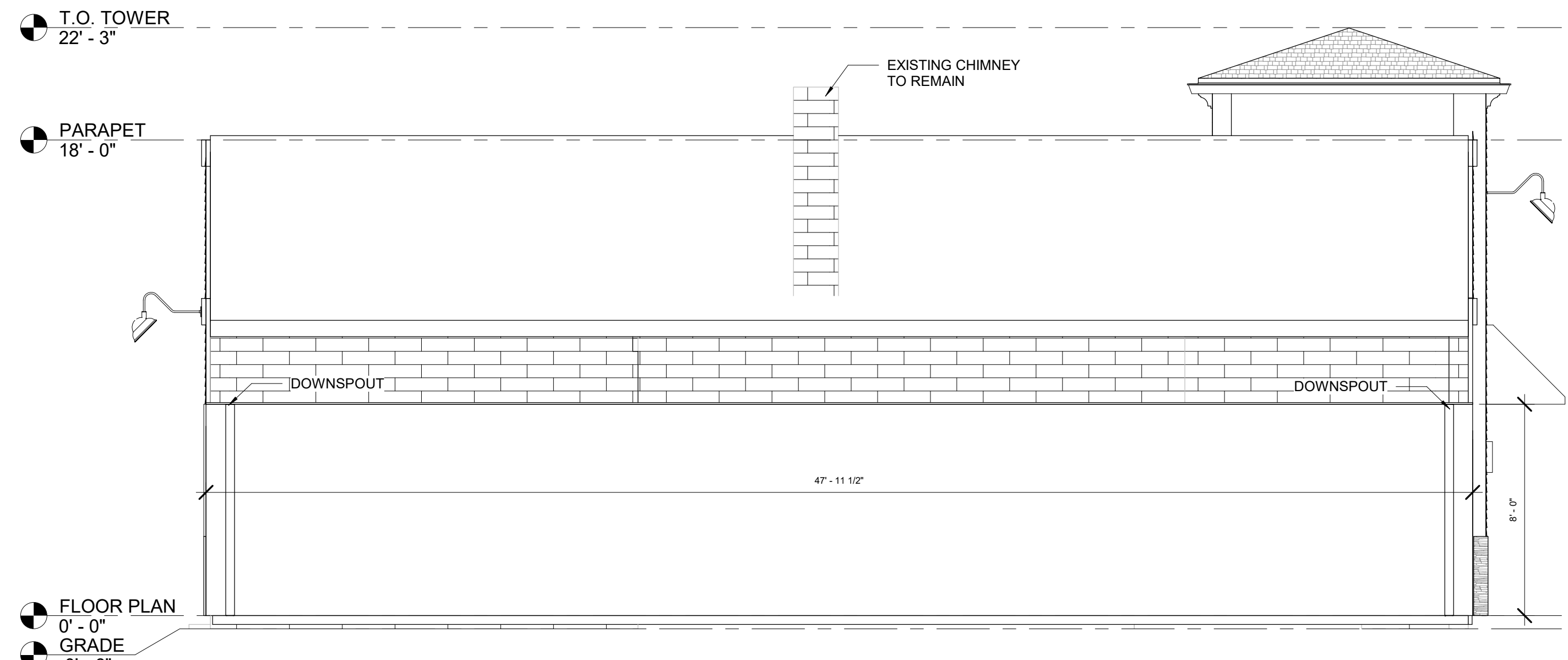
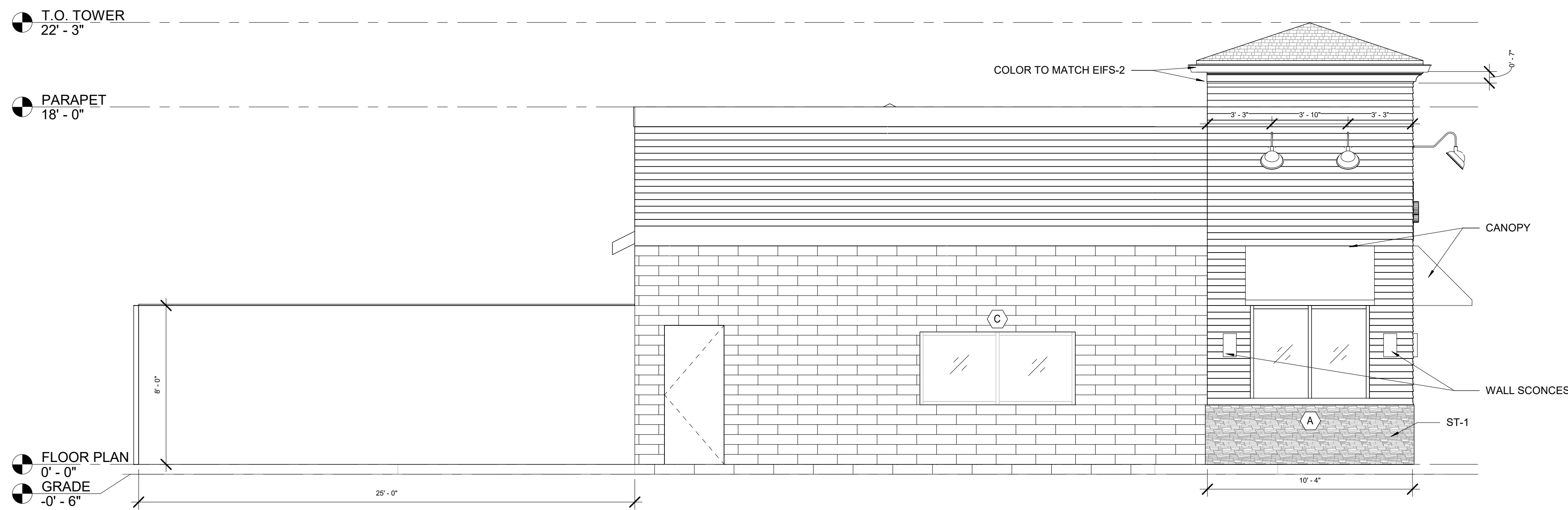


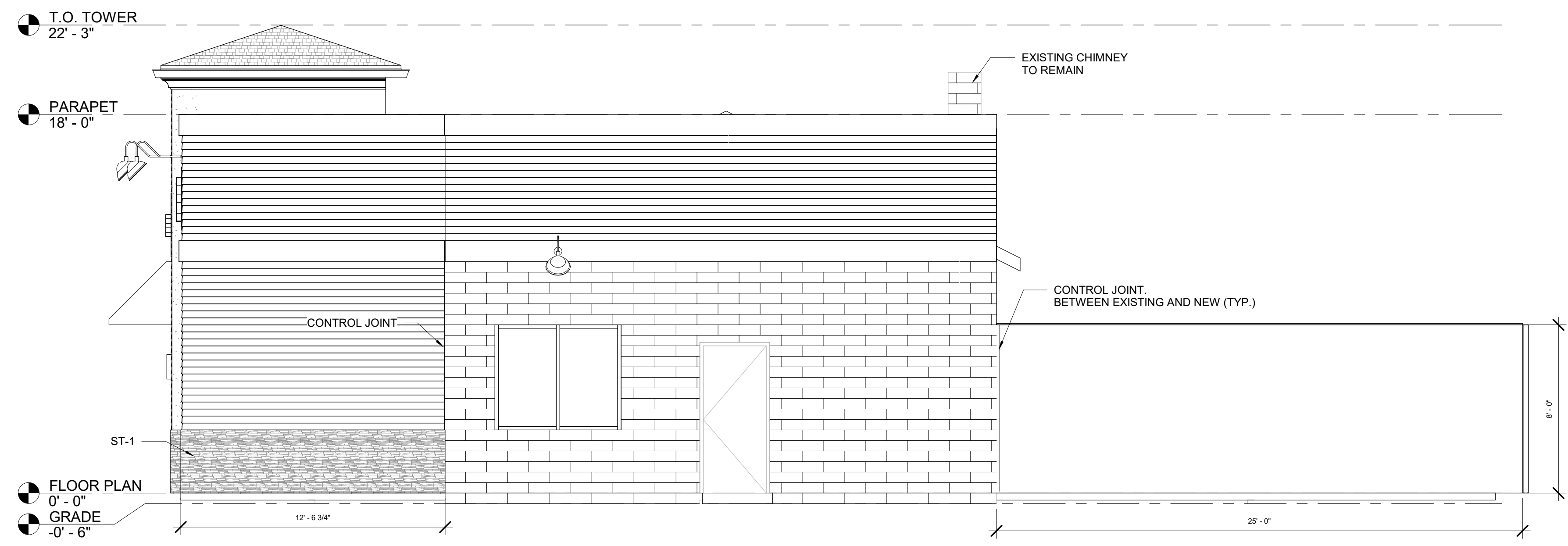
1 EAST ELEVATION
A-3 1/4" = 1'-0"



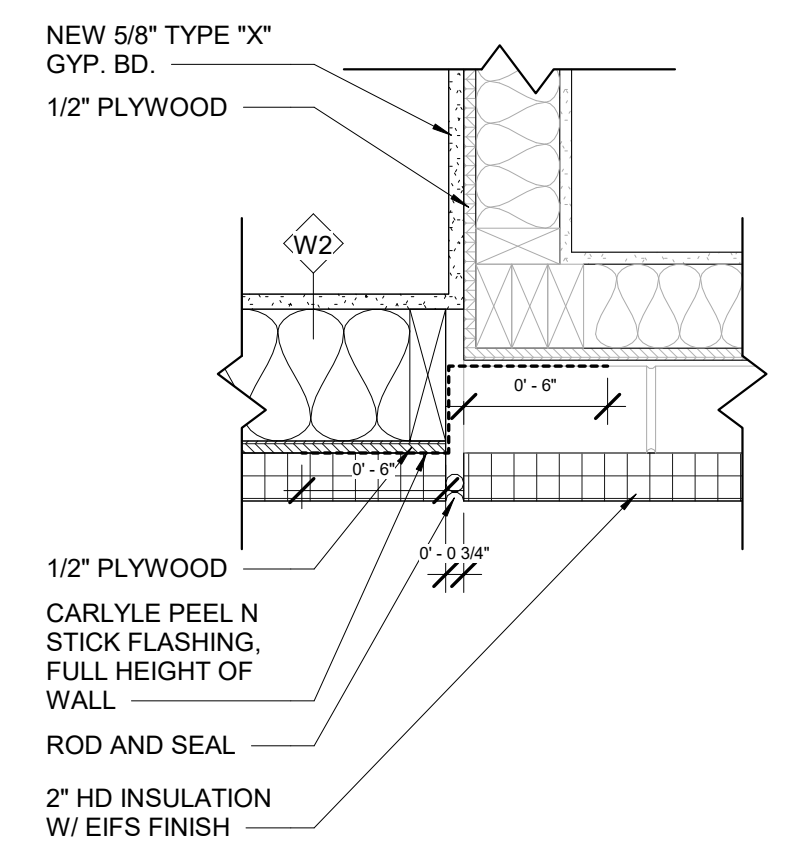
2 WEST ELEVATION
A-3 1/4" = 1'-0"



3 SOUTH ELEVATION
A-3 1/4" = 1'-0"



4 NORTH ELEVATION
A-3 1/4" = 1'-0"



7 CONTROL JOINT DETAIL @ EXIST. AND NEW WALL INTERSECTION
A-3 1 1/2" = 1'-0"

EIFS SYSTEM SPECS	
FINISH	FINE TEXTURE
INSULATION	2" R-7.5 MIN HD INSULATION
DRAIN TYPE	MORTAR ADHESIVE W/ GROOVES
ACCESSORIES	DRIP
BACKSTOP NT.	PERMEABLE BACKSTOP NT
DETAILS	ALL TO CONFORM W/ DRYKIT OR EQUAL. VERIFY ALL DETAILS W/ MANUFACTURER'S INSTRUCTIONS.
TO MEET	ASTM E2588, 2570 FOR AIR BARRIER, ASTM E2273 FOR DRAINAGE.
PROVIDE	SPECIAL INSPECTIONS PER CH 1709 AS REQUIRED BY LOCAL B.O.

SEALANT SCHEDULE	
STEEL/LALUM TO EIFS	2-PART POLYURETHANE OR LOW MODULUS SILICONE W/ PRIMER
INTERIOR	ALEX
ROOF FLASHINGS	AS RECOMMENDED BY MANUFACTURER
EIFS CONTROL JOINTS & EIFS TO SYNTHETIC STONE	LOW MODULUS SILICONE W/ PRIMER

EXTERIOR FINISH INDEX	
ST-1	COLOR: PACIFIC LEDGESTONE, CORDOVAN
ALL FINISHES TO BE VERIFIED W/ OWNER PRIOR TO INSTALLATION.	

RUSSELL AND DAMSON
ARCHITECTURE & ENGINEERING
1111 Main Street, East Hartford, CT 06108
TEL: (860) 282-1100 FAX: (860) 282-5272 EMAIL: info@rad.com

NO.	REVISIONS	DESCRIPTION	DATE	BY

STAMP:

NOT FOR CONSTRUCTION
NOT FOR BID

PROJECT:

PACKAGE STORE ADDITION & RENOVATION
ROUTE 66, EAST HAMPTON, CT

FILE NO: 17064

SCALE:	AS NOTED
DATE:	DDMMYYYY
DRAWN BY:	JSL
CHECKED BY:	HAP

SHEET TITLE:

BUILDING ELEVATIONS

SHEET NUMBER:
A-3