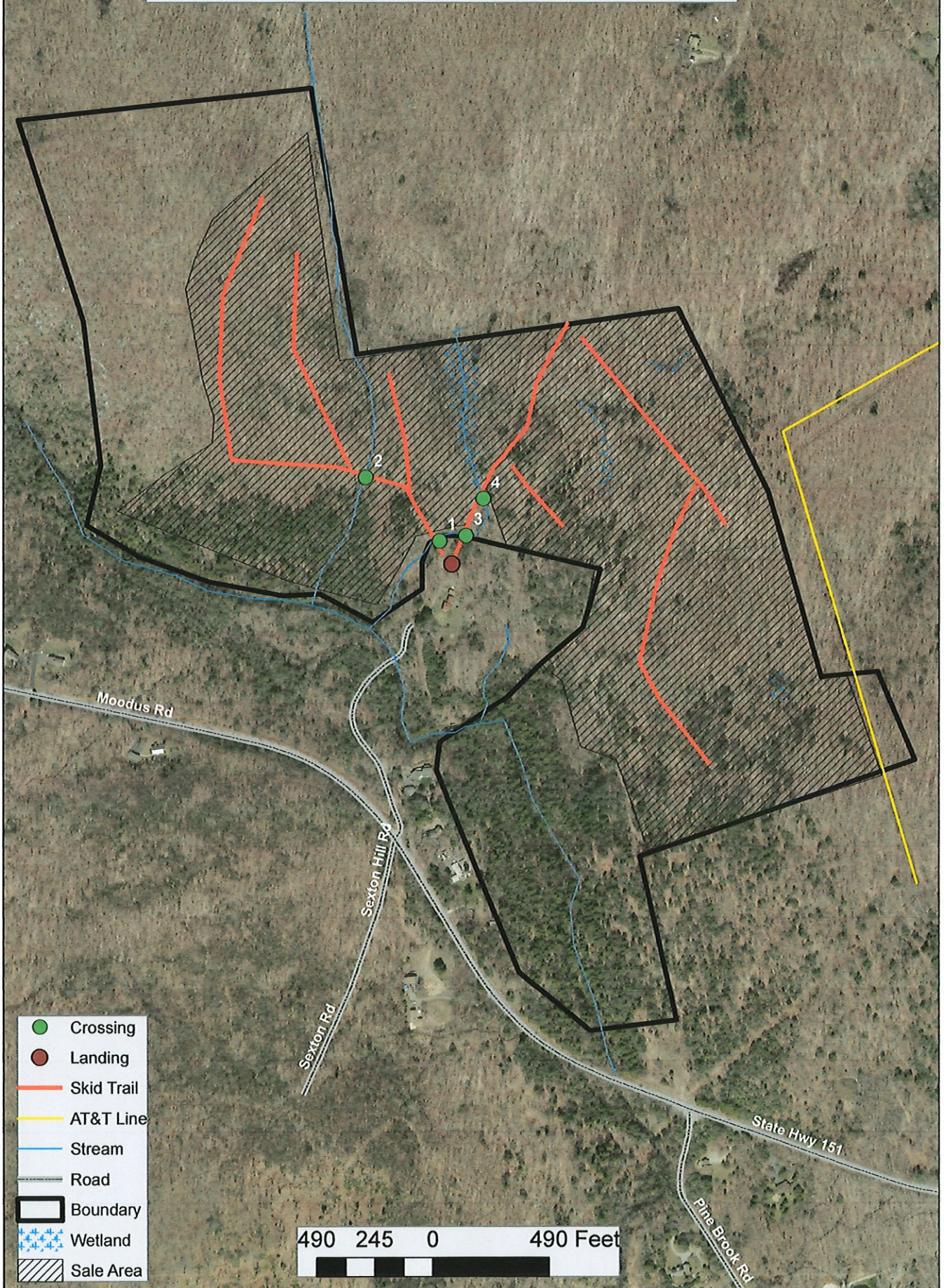


# Masters and Williams Property Sexton Hill Road East Hampton, Connecticut



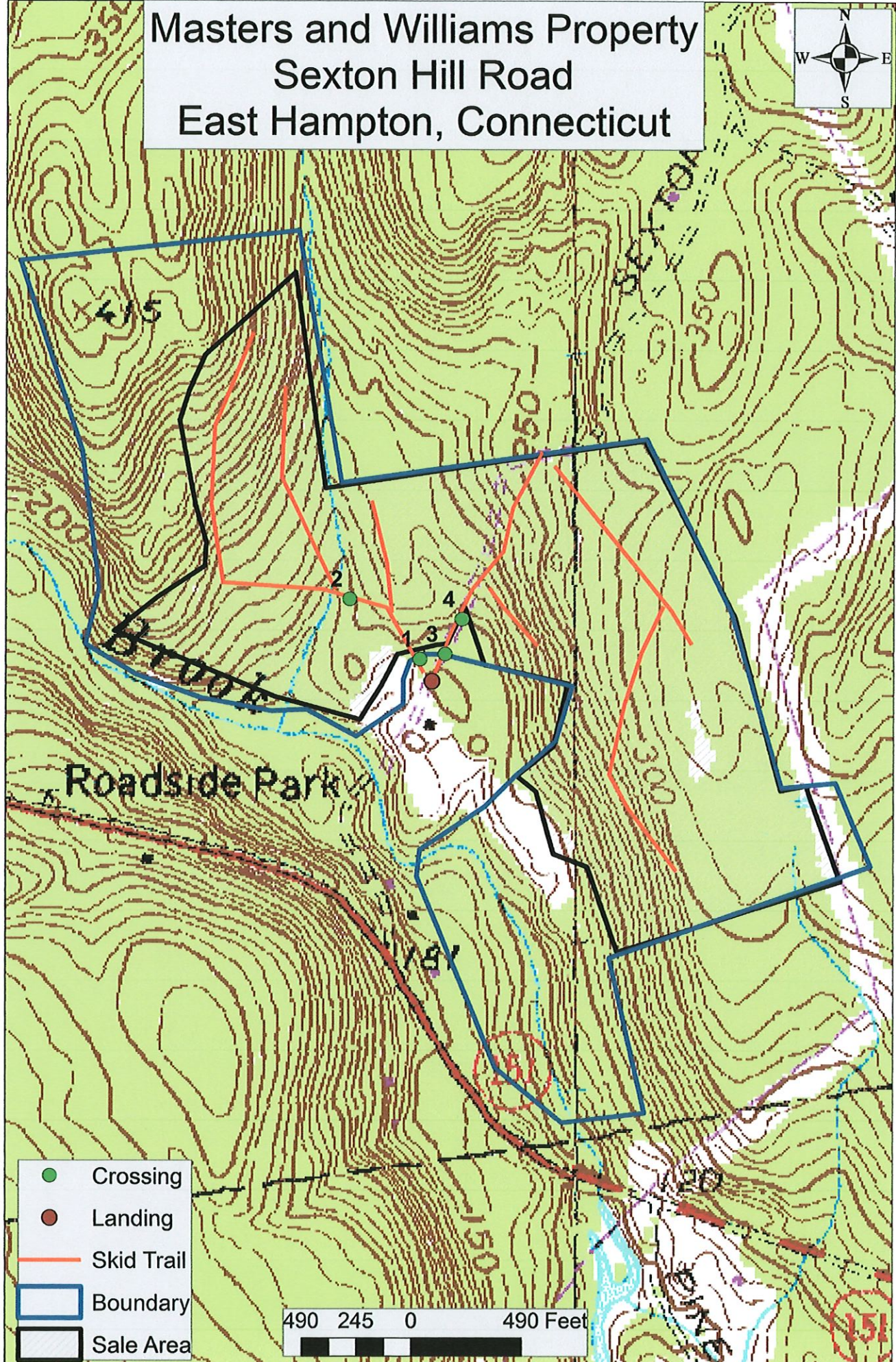
Old Young St



- Crossing
- Landing
- Skid Trail
- AT&T Line
- Stream
- Road
- Boundary
- ▨ Wetland
- ▨ Sale Area

490 245 0 490 Feet

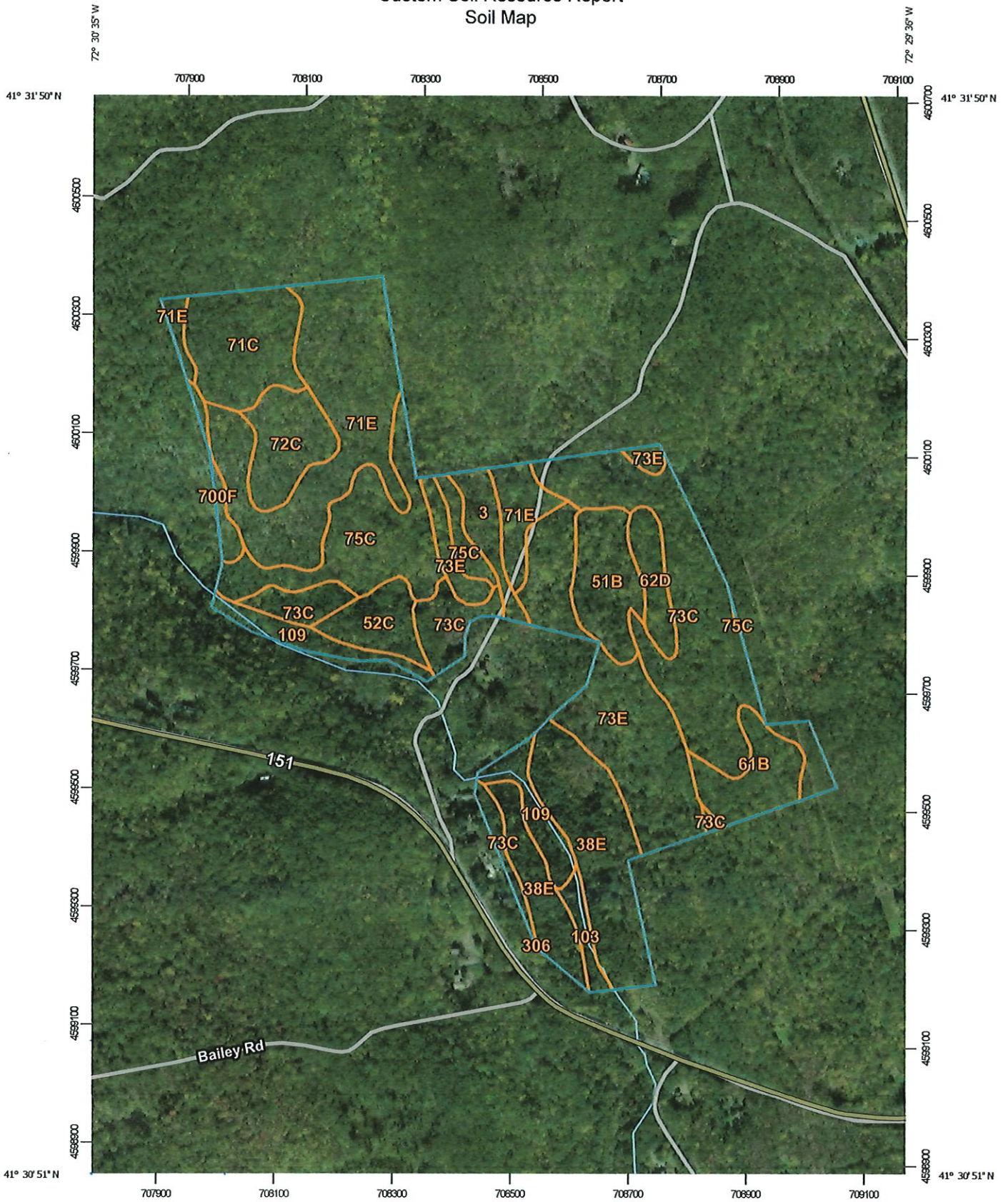
# Masters and Williams Property Sexton Hill Road East Hampton, Connecticut



- Crossing
- Landing
- Skid Trail
- Boundary
- Sale Area

490 245 0 490 Feet

# Custom Soil Resource Report Soil Map



Map Scale: 1:8,890 if printed on A portrait (8.5" x 11") sheet.

0 100 200 400 600 Meters

0 400 800 1600 2400 Feet

Map projection: Web Mercator Corner coordinates: WGS84 Edge tics: UTM Zone 18N WGS84

## Map Unit Legend

Map Unit Symbol	Map Unit Name	Acres in AOI	Percent of AOI
3	Ridgebury, Leicester, and Whitman soils, 0 to 8 percent slopes, extremely stony	2.8	2.1%
38E	Hinckley loamy sand, 15 to 45 percent slopes	15.9	11.6%
51B	Sutton fine sandy loam, 0 to 8 percent slopes, very stony	5.9	4.3%
52C	Sutton fine sandy loam, 2 to 15 percent slopes, extremely stony	3.8	2.7%
61B	Canton and Charlton fine sandy loams, 0 to 8 percent slopes, very stony	5.0	3.6%
62D	Canton and Charlton fine sandy loams, 15 to 35 percent slopes, extremely stony	2.9	2.1%
71C	Nipmuck-Brimfield-Rock outcrop complex, 3 to 15 percent slopes	8.4	6.1%
71E	Nipmuck-Brimfield-Rock outcrop complex, 15 to 45 percent slopes	23.1	16.8%
72C	Nipmuck-Brookfield complex, 3 to 15 percent slopes, very rocky	5.5	4.0%
73C	Charlton-Chatfield complex, 0 to 15 percent slopes, very rocky	25.6	18.6%
73E	Charlton-Chatfield complex, 15 to 45 percent slopes, very rocky	18.0	13.0%
75C	Hollis-Chatfield-Rock outcrop complex, 3 to 15 percent slopes	12.5	9.1%
103	Rippowam fine sandy loam	1.4	1.0%
109	Fluvaquents-Udifluvents complex, frequently flooded	5.6	4.1%
306	Udorthents-Urban land complex	0.0	0.0%
700F	Rock outcrop-Brimfield complex, 45 to 60 percent slopes	1.3	1.0%
<b>Totals for Area of Interest</b>		<b>137.6</b>	<b>100.0%</b>