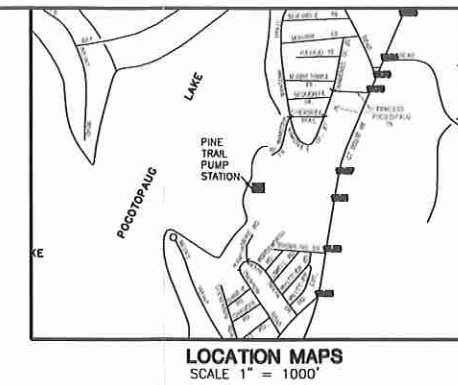


CONSTRUCTION SEQUENCE

1. NOTIFY TOWN STAFF AT LEAST 48 HOURS IN ADVANCE OF COMMENCEMENT OF CONSTRUCTION
2. INSTALL WOOD CHIP BERM EROSION AND SEDIMENTATION CONTROL
3. EXCAVATE LOCATIONS OF CONCRETE PADS, UNISTRUTS AND ELECTRIC LINES
4. FORM AND POUR CONCRETE.
5. RAKE DISTURBED SOIL AND SEED WITH A MIXTURE OF KENTUCKY BLUE GRASS CREEPING RED FESCUE, AND PERENNIAL RYE (20/20/5 LBS PER ACRE)
6. INSTALL GENERATORS, WIRING AND CONTROLS.
7. WHEN SITE IS VEGETATIVELY STABLE, REMOVE WOODCHIP BERM



REV.	DESCRIPTION	DATE

CONSULTANT:
SALAMONE & ASSOCIATES, P.C.
CONSULTING ENGINEERS
118 North Plains Industrial Road
Wallingford, Connecticut 06495
Phone: (800) 881-6800 Fax: (800) 807-6780

DISCLAIMER
THE INFORMATION INDICATED HEREWITH IS THE SOLE PROPERTY OF SALAMONE & ASSOCIATES, P.C. AND ANY REPRODUCTION BY ANY METHOD IN PART IS STRICTLY PROHIBITED WITHOUT WRITTEN PERMISSION OF SALAMONE & ASSOCIATES, P.C.

NOTES:

**FOR REVIEW ONLY
NOT FOR CONSTRUCTION**

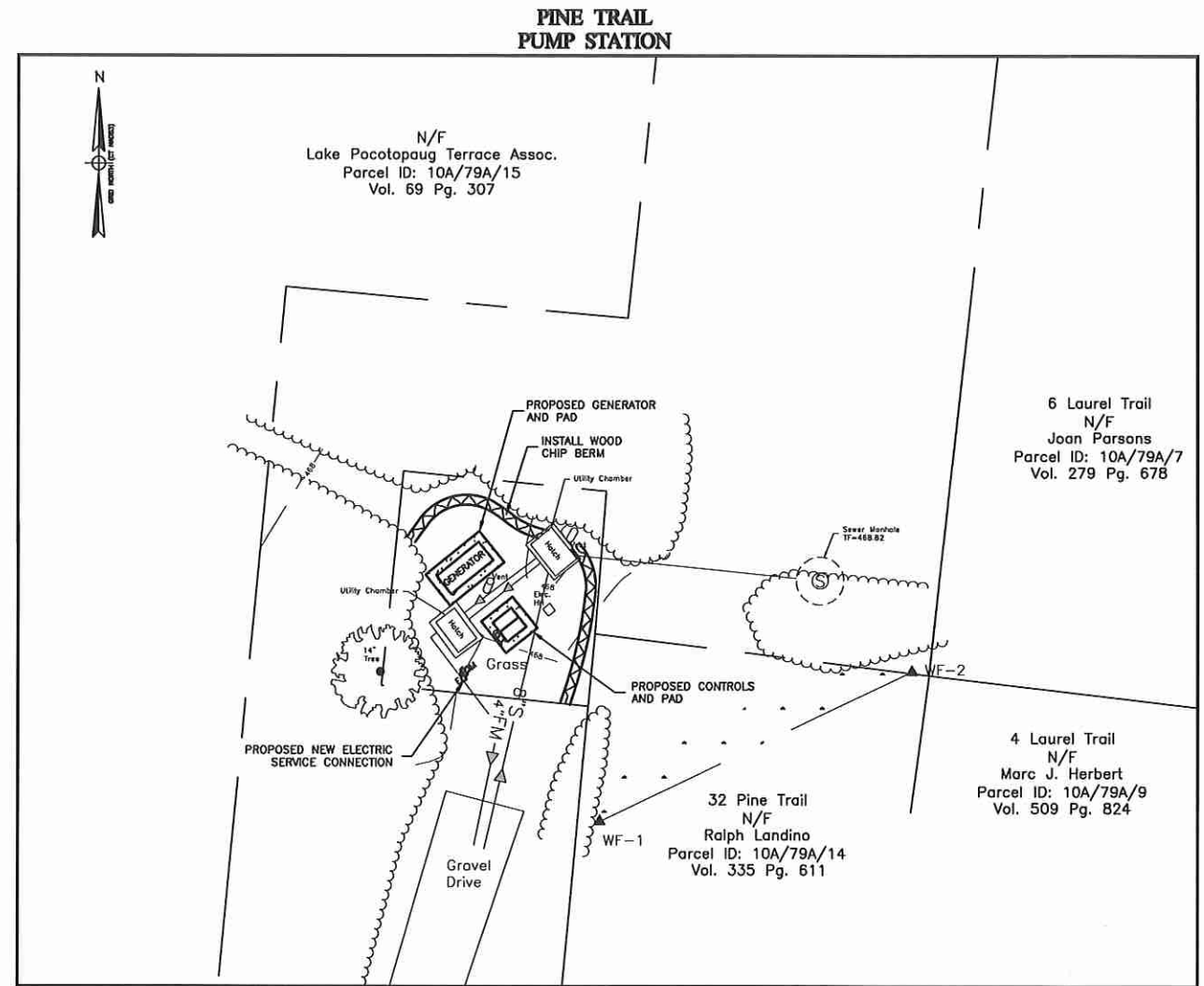
PROJECT TITLE
**CONTRACT DOCUMENTS FOR
BACK-UP GENERATOR INSTALLATION
AND PUMP CONTROL RELOCATION
AT
BARBARA AVE
NORTH MAIN ST
PINE TRAIL
PUMP STATIONS
EAST HAMPTON, CONNECTICUT**

DRAWING TITLE

JOB NO.	8608.01
PROJECT MANAGER	JAB
ENGINEER/DRAWN BY	
DRAWN BY	
SCALE	AS NOTED
DATE	12/2018

SEAL:

DRAWING NO.



MAP REFERENCES

1. "MAP SHOWING EASEMENTS TO BE ACQUIRED FROM LAKE POCOTOPAUG TERRACE ASSOCIATION BY THE TOWN OF EAST HAMPTON, EAST HAMPTON WATER & SEWER AUTHORITY, EAST HAMPTON, CONNECTICUT, SANITARY SEWER PROJECT - CONTRACT No. 8 & 11" BY CAHN ENGINEERS, INC., CONSULTING ENGINEERS, WALLINGFORD CONNECTICUT SCALE=1"40' DATE DEC. 1977 CE NO 04190 EB MAP NO 81 REVISED NOV. 1979
2. "EAST HAMPTON WATER & SEWER AUTHORITY, EAST HAMPTON, CONNECTICUT, PUMP STATION CONTRACT No 11 SITE PLANS" BY CAHN ENGINEERS INC, CONSULTING ENGINEERS, WALLINGFORD, CONNECTICUT 04-190 PR SHEET 11-6 NO DATE SEPT. 1979 REVISED 12/2/81
3. "EAST HAMPTON WATER & SEWER AUTHORITY, EAST HAMPTON, CONNECTICUT, PUMP STATION CONTRACT No 11 SITE PLANS" BY CAHN ENGINEERS INC, CONSULTING ENGINEERS, WALLINGFORD, CONNECTICUT 04-190 PR SHEET NO 11-7 DATE SEPT. 1979 REVISED 12/22/81
4. "EAST HAMPTON WATER & SEWER AUTHORITY, EAST HAMPTON, CONNECTICUT, SANITARY SEWER SYSTEM NORTH MAIN STREET SEWAGE PUMPING STATION" BY CAHN ENGINEERS INC, CONSULTING ENGINEERS, WALLINGFORD, CONNECTICUT SHEET NO 10-6 DATE FEB. 1980

SURVEY NOTES

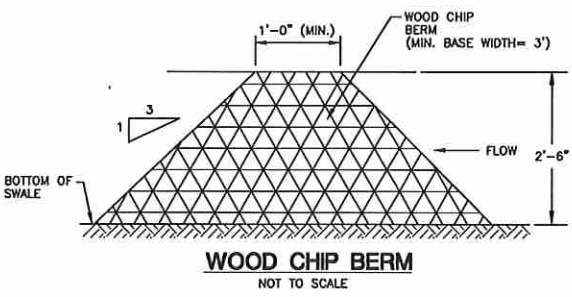
1. THIS SURVEY AND MAP HAS BEEN PREPARED IN ACCORDANCE WITH SECTION 20-300b-1 THRU 20-300b-20 OF THE REGULATIONS FOR STATE AGENCIES "STANDARDS FOR SURVEYS AND MAPS IN THE STATE OF CONNECTICUT" AS ENDORSED BY THE CONNECTICUT ASSOCIATION OF LAND SURVEYORS, INC.
 - A. TYPE OF SURVEY: COMPILATION SURVEY
 - B. THIS PLAN WAS COMPILED FROM OTHER MAPS, RECORD RESEARCH OR OTHER SOURCES OF INFORMATION. IT IS NOT TO BE CONSTRUED AS HAVING BEEN OBTAINED AS THE RESULT OF A FIELD SURVEY, AND IS SUBJECT TO SUCH CHANGE AS AN ACCURATE FIELD SURVEY MAY DISCLOSE.
 - C. HORIZONTAL ACCURACY: CLASS D
VERTICAL ACCURACY: CLASS V-2
TOPOGRAPHIC ACCURACY: CLASS T-2
 - D. INTENT: TO DEPICT APPROXIMATE BOUNDARY LINES, EASEMENTS, TOPOGRAPHY AND CURRENT CONDITIONS TO BE USED AS A BASE MAP FOR GENERATOR INSTALLATIONS.
2. LATEST DATE OF FIELD WORK: 11/20/2018.
3. SUBSURFACE AND ENVIRONMENTAL CONDITIONS OTHER THAN WETLAND DELINEATION WERE NOT EXAMINED OR CONSIDERED AS A PART OF THIS FIELD SURVEY. LOCATIONS OF DEPICTED UNDERGROUND UTILITIES ARE APPROXIMATE AND TAKEN FROM REFERENCED DRAWINGS.
4. ELEVATION DATUM AND HORIZONTAL ORIENTATION ARE BASED UPON GPS OBSERVATIONS (NAV88 & CTNAD83)

TO MY KNOWLEDGE AND BELIEF THIS PLAN IS SUBSTANTIALLY CORRECT AS NOTED OR DEPICTED HEREON.

RYAN J. CHEVERIE, L.L.S. 770454 DATE

I HAVE REVIEWED THE WETLANDS ON THE PROPERTY IN THE FIELD AND HAVE REVIEWED THE WETLANDS AS SHOWN ON THE PLAN AND FIND THAT THEY SUBSTANTIALLY REPRESENT THE WETLANDS AS DELINEATED IN THE FIELD.

ROBERT C. RUSSO
CERTIFIED SOIL SCIENTIST DATE



LEGEND

- — — — — PROPERTY LINE
- — — — — EASEMENT
- 02 — CONTOUR
- o — o — CHAIN LINK FENCE
- o — o — UTILITY POLE
- o — o — N/F
- Vol. Pg. DEED VOLUME & PAGE

PRELIMINARY

CLA Engineers, Inc.
CIVIL • STRUCTURAL • SURVEYING
317 Main Street Norwich, CT 06360
(860) 886-1986 Fax (860) 886-0166