

190, 196, & 202 FLANDERS ROAD
EAST LYME, CT 06357

OWNER:

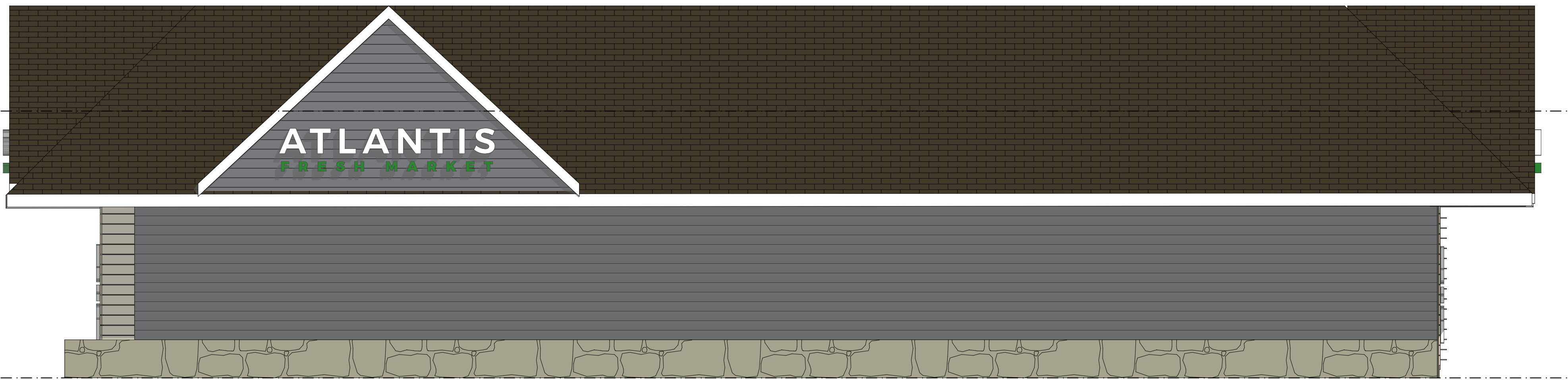
Atlantis Management Group
555 S Columbus Ave #201
Mt. Vernon NY 10550
contact: Jose Montero
T, 914-699-9500 E, Josem@atlantismgmt.com

ARCHITECT:

Pablo De Miguel Architect PLLC
162 14th Street
Brooklyn, NY 11215
contact: Pablo de Miguel AIA
T, 646 265 0338 E, pablo@pablodemiguel.com
W, www.pablodemiguel.com



01 EAST ELEVATION
SCALE: 1/4" = 1'-0"



02 SOUTH ELEVATION
SCALE: 1/4" = 1'-0"



03 ELEVATIONS VIEW
SCALE: 1:31.0975

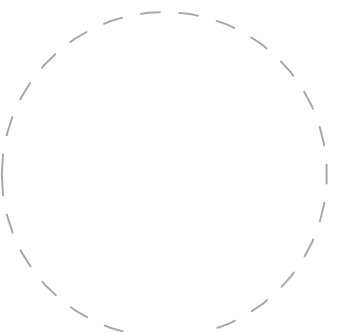
1 04/21/22 Issued for Review

ISSUE DATE DESCRIPTION

NOT FOR CONSTRUCTION

© 2022 by Pablo De Miguel Architect PLLC.
All rights reserved. This drawing or parts thereof, may not be reproduced in any form without permission.

SEAL & SIGNATURE



Pablo de Miguel AIA

SHEET NAME:

PROPOSED BUILDING
ELEVATIONS

DATE: SCALE: 1/4" = 1'-0", 1:31.0975, 1:100, 1:40

PROJECT No.: 2204 PAGE: #LayNoInSubset of #NumOfLayoutsInSubs of

DRAWING No.: A-201.00

RECEIVED
6.9.2022
East Hampton
Land Use Office

FINISH SCHEDULE

ITEM CODE	LOCATION	DESCRIPTION	MANUFACTURER	PRODUCT #/ FINISH
MTL-01	FACADE	ALUMINUM PANEL	ALUCOBOND	CLASSIC CHAMPAGNE METALLIC PVDF-3/GLOSS 30
MTL-02	FACADE / CORRUGATED PANELS	ALUMINUM PANEL	PURE-FORM	WOOD PRINT, BALTIC ASH #VL012
MTL-03	CANTILEVER/ CANOPY & SIDE PANELS	ALUMINUM PANEL TRIMS	ALUCOBOND	CONTEMPORARY GRAPHITE MICA PVDF-3/ GLOSS 30
MTL-04	STOREFRONT	ALUMINUM FRAME		BLACK ANODIZED OR PAINTED
ST-05	PAINTED CMU	SIDE OF BUILDING PAINTED EXISTING AND NEW CMU EXTERIOR WALL	BENJAMIN MOORE	GRAPHITE 1603

190, 196, & 202 FLANDERS ROAD
EAST LYME, CT 06357

OWNER:

Atlantis Management Group
555 S Columbus Ave #201
Mt. Vernon NY 10550
contact: Jose Montero
T. 914-699-9500 E. Josem@atlantismgmt.com

ARCHITECT:

Pablo De Miguel Architect PLLC
162 14th Street
Brooklyn, NY 11215
contact: Pablo de Miguel AIA
T. 646 265 0338 E. pablo@pablodemiguel.com
W. www.pablodemiguel.com

FINISH SCHEDULE

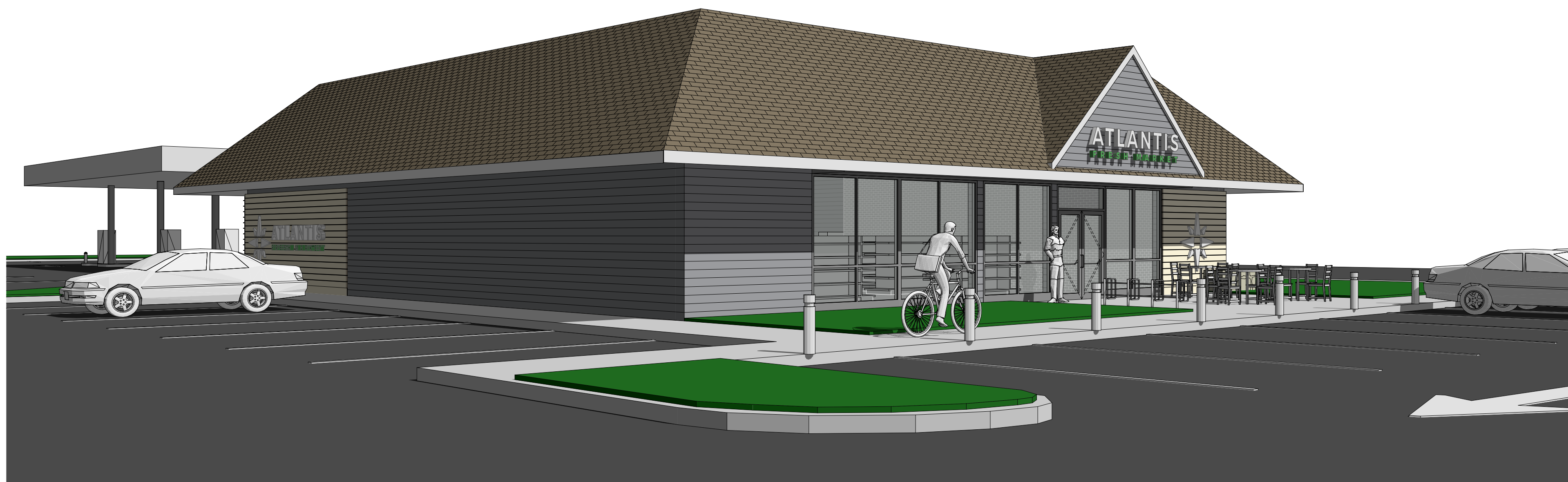
ITEM CODE	LOCATION	DESCRIPTION	MANUFACTURER	PRODUCT # / FINISH
MTL-01	FACADE	ALUMINUM PANEL	ALUCOBOND	CLASSIC CHAMPAGNE METALLIC PVDF-3/GLOSS 30
MTL-02	FACADE / CORRUGATED PANELS	ALUMINUM PANEL	PURE-FORM	WOOD PRINT. BALTIC ASH #V.012
MTL-03	CANTILEVER/ CANOPY & SIDE PANELS	ALUMINUM PANEL TRIMS	ALUCOBOND	CONTEMPORARY GRAPHITE MICA PVDF-3/ GLOSS 30
MTL-04	STOREFRONT	ALUMINUM FRAME		BLACK ANODIZED OR PAINTED
ST-05	PAINTED CMU	SIDE OF BUILDING PAINTED EXISTING AND NEW CMU EXTERIOR WALL	BENJAMIN MOORE	GRAPHITE 1603



01 WEST ELEVATION
SCALE: 1/4" = 1'-0"



02 NORTH ELEVATION
SCALE: 1/4" = 1'-0"



03 VIEW 3
SCALE: 1:27.8723

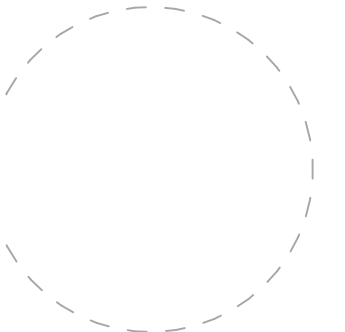
1 04/21/22 Issued for Review

ISSUE	DATE	DESCRIPTION

NOT FOR CONSTRUCTION

© 2022 by Pablo De Miguel Architect PLLC.
All rights reserved. This drawing or parts thereof, may not be reproduced in any form without permission.

SEAL & SIGNATURE



Pablo de Miguel AIA

SHEET NAME:

PROPOSED BUILDING
ELEVATIONS II

DATE:	SCALE: 1" = 1'-0"
PROJECT No.: 2204	PAGE: #LayNoInSubset of #LayNoInSubset of #NumOfLayoutsInSubset of
DRAWING No.:	

A-202.00