

LOT 44 CONT'D

LOT 44

TEST PIT # 184
DATE: 12-15-04
DEPTH: 30"
MATERIALS: 0-7" TOPSOIL
7-15" YELLOWISH BROWN FINE SANDY LOAM
15-27" YELLOWISH BROWN LOAMY SAND
27-80" OLIVE BROWN LOAMY SAND

TEST PIT # 185
DATE: 12-15-04
DEPTH: 30"
MATERIALS: 0-7" TOPSOIL
7-15" YELLOWISH BROWN FINE SANDY LOAM
15-27" YELLOWISH BROWN LOAMY SAND
27-80" OLIVE BROWN LOAMY SAND

TEST PIT # 186
DATE: 12-15-04
DEPTH: 30"
MATERIALS: 0-7" TOPSOIL
7-15" YELLOWISH BROWN FINE SANDY LOAM
15-27" YELLOWISH BROWN LOAMY SAND
27-80" OLIVE BROWN LOAMY SAND

TEST PIT # 187
DATE: 12-15-04
DEPTH: 30"
MATERIALS: 0-7" TOPSOIL
7-15" YELLOWISH BROWN FINE SANDY LOAM
15-27" YELLOWISH BROWN LOAMY SAND
27-80" OLIVE BROWN LOAMY SAND

TEST PIT # 188
DATE: 12-15-04
DEPTH: 30"
MATERIALS: 0-7" TOPSOIL
7-15" YELLOWISH BROWN FINE SANDY LOAM
15-27" YELLOWISH BROWN LOAMY SAND
27-80" OLIVE BROWN LOAMY SAND

TEST PIT # 189
DATE: 12-15-04
DEPTH: 30"
MATERIALS: 0-7" TOPSOIL
7-15" YELLOWISH BROWN FINE SANDY LOAM
15-27" YELLOWISH BROWN LOAMY SAND
27-80" OLIVE BROWN LOAMY SAND

TEST PIT # 190
DATE: 12-15-04
DEPTH: 30"
MATERIALS: 0-7" TOPSOIL
7-15" YELLOWISH BROWN FINE SANDY LOAM
15-27" YELLOWISH BROWN LOAMY SAND
27-80" OLIVE BROWN LOAMY SAND

TEST PIT # 191
DATE: 12-15-04
DEPTH: 30"
MATERIALS: 0-7" TOPSOIL
7-15" YELLOWISH BROWN FINE SANDY LOAM
15-27" YELLOWISH BROWN LOAMY SAND
27-80" OLIVE BROWN LOAMY SAND

TEST PIT # 192
DATE: 12-15-04
DEPTH: 30"
MATERIALS: 0-7" TOPSOIL
7-15" YELLOWISH BROWN FINE SANDY LOAM
15-27" YELLOWISH BROWN LOAMY SAND
27-80" OLIVE BROWN LOAMY SAND

TEST PIT # 193
DATE: 12-15-04
DEPTH: 30"
MATERIALS: 0-7" TOPSOIL
7-15" YELLOWISH BROWN FINE SANDY LOAM
15-27" YELLOWISH BROWN LOAMY SAND
27-80" OLIVE BROWN LOAMY SAND

TEST PIT # 194
DATE: 12-15-04
DEPTH: 30"
MATERIALS: 0-7" TOPSOIL
7-15" YELLOWISH BROWN FINE SANDY LOAM
15-27" YELLOWISH BROWN LOAMY SAND
27-80" OLIVE BROWN LOAMY SAND

TEST PIT # 195
DATE: 12-15-04
DEPTH: 30"
MATERIALS: 0-7" TOPSOIL
7-15" YELLOWISH BROWN FINE SANDY LOAM
15-27" YELLOWISH BROWN LOAMY SAND
27-80" OLIVE BROWN LOAMY SAND

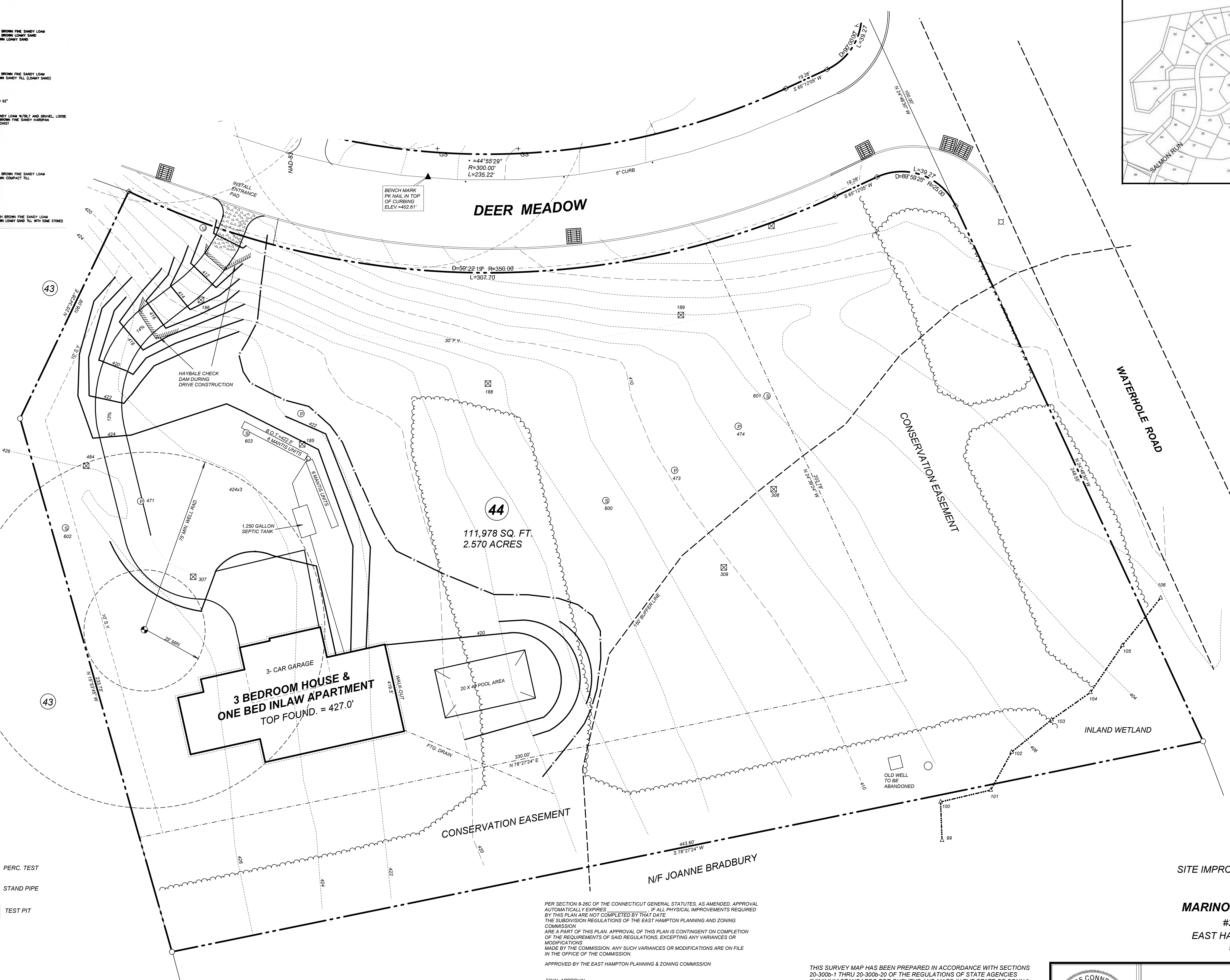
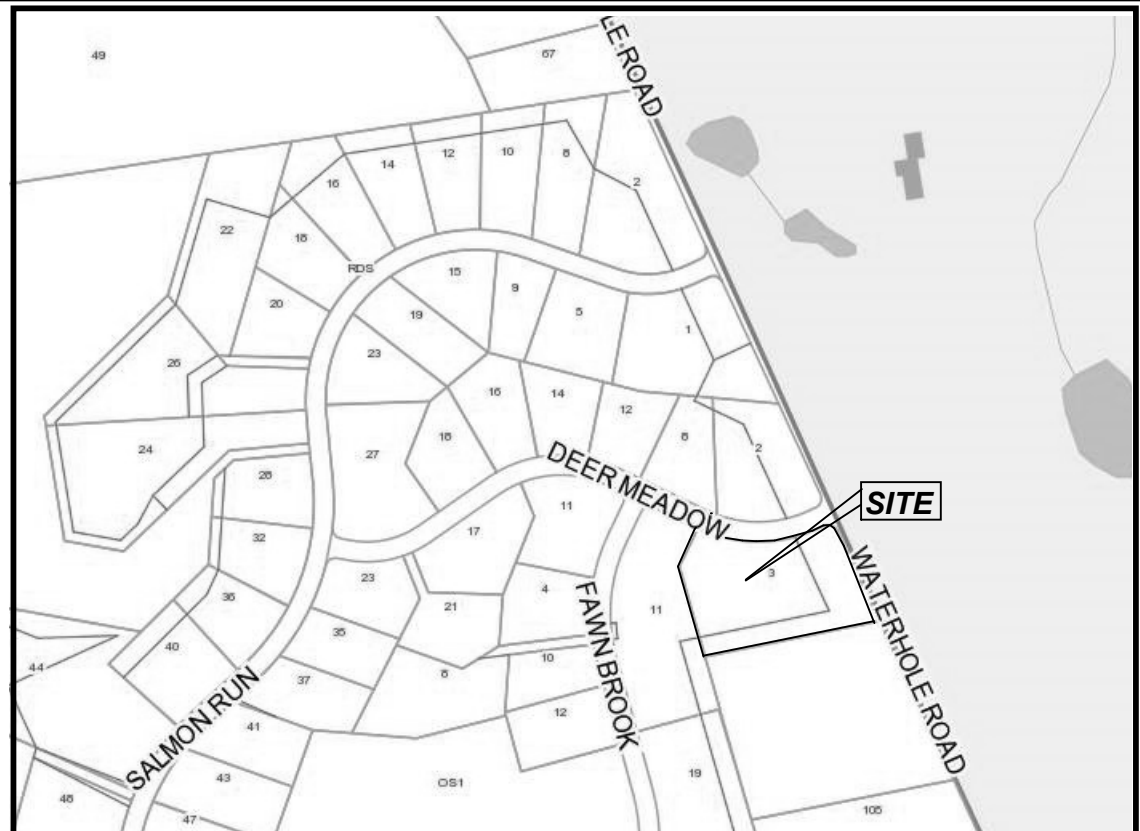
TEST PIT # 196
DATE: 12-15-04
DEPTH: 30"
MATERIALS: 0-7" TOPSOIL
7-15" YELLOWISH BROWN FINE SANDY LOAM
15-27" YELLOWISH BROWN LOAMY SAND
27-80" OLIVE BROWN LOAMY SAND

TEST PIT # 197
DATE: 12-15-04
DEPTH: 30"
MATERIALS: 0-7" TOPSOIL
7-15" YELLOWISH BROWN FINE SANDY LOAM
15-27" YELLOWISH BROWN LOAMY SAND
27-80" OLIVE BROWN LOAMY SAND

TEST PIT # 198
DATE: 12-15-04
DEPTH: 30"
MATERIALS: 0-7" TOPSOIL
7-15" YELLOWISH BROWN FINE SANDY LOAM
15-27" YELLOWISH BROWN LOAMY SAND
27-80" OLIVE BROWN LOAMY SAND

TEST PIT # 199
DATE: 12-15-04
DEPTH: 30"
MATERIALS: 0-7" TOPSOIL
7-15" YELLOWISH BROWN FINE SANDY LOAM
15-27" YELLOWISH BROWN LOAMY SAND
27-80" OLIVE BROWN LOAMY SAND

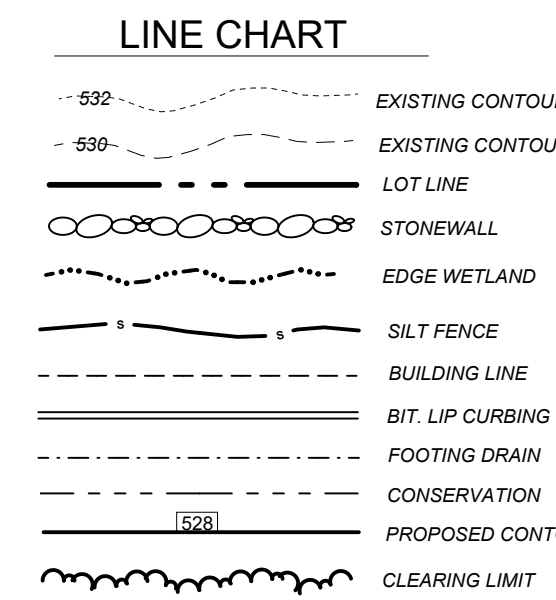
TEST PIT # 200
DATE: 12-15-04
DEPTH: 30"
MATERIALS: 0-7" TOPSOIL
7-15" YELLOWISH BROWN FINE SANDY LOAM
15-27" YELLOWISH BROWN LOAMY SAND
27-80" OLIVE BROWN LOAMY SAND



ZONING TABLE
R-4 ZONE (OPEN SPACE SUBDIVISION)

YARD REQUIRED	GIVEN
FRONT - 30'	155'
SIDE - 10'	29'
REAR - 25'	71'

HOUSE COVERAGE = 3816 SQ. FT. / 3%
DRIVE COVERAGE = 3190 SQ. FT. / 3%
TOTAL LOT COVERAGE ALLOWED 20%
GIVEN COVERAGE = 5%



BOUNDARY DATA TAKEN FROM SUBDIVISION MAPS KNOWN AS SALMON RUN, CONSERVATION SUBDIVISION PREPARED BY MEGSON & HEAGLE, CIVIL ENGINEERS & LAND SURVEYORS 81 RANKIN ROAD, GLASTONBURY, CONN.

PER SECTION 8-26C OF THE CONNECTICUT GENERAL STATUTES, AS AMENDED, APPROVAL AUTOMATICALLY EXPIRES IF ALL PHYSICAL IMPROVEMENTS REQUIRED BY THIS PLAN ARE NOT COMPLETED BY THAT DATE. THE SUBDIVISION REGULATIONS OF THE EAST HAMPTON PLANNING AND ZONING COMMISSION ARE A PART OF THIS PLAN. APPROVAL OF THIS PLAN IS CONTINGENT ON COMPLETION OF THE REQUIREMENTS OF SAID REGULATIONS, EXCEPTING ANY VARIANCES OR MODIFICATIONS MADE BY THE COMMISSION. ANY SUCH VARIANCES OR MODIFICATIONS ARE ON FILE IN THE OFFICE OF THE COMMISSION.

APPROVED BY THE EAST HAMPTON PLANNING & ZONING COMMISSION

FINAL APPROVAL _____ CHAIRMAN
EXPIRATION DATE: _____
CONDITIONAL APPROVAL _____ CHAIRMAN
DATE: _____
EXPIRATION DATE: _____

THIS SURVEY MAP HAS BEEN PREPARED IN ACCORDANCE WITH SECTIONS 20-300b-1 THRU 20-300b-20 OF THE REGULATIONS OF STATE AGENCIES "MINIMUM STANDARDS FOR SURVEYS AND MAPS IN THE STATE OF CONN." AS ENDORSED BY THE CONN. ASSOC. OF LAND SURVEYORS, INC. IT IS A IMPROVEMENT LOCATION SURVEY BASED ON A DEPENDENT RESURVEY CONFORMING TO CLASS A-2 STANDARDS.

TO THE BEST OF MY KNOWLEDGE AND BELIEF THIS MAP IS SUBSTANTIALLY CORRECT AS NOTED HEREON

Joel M. Fuller, L.S.
JOEL M. FULLER C.T. L.S. NO. 14197

RECEIVED
3-1-2021
East Hampton
Land Use Office

SITE IMPROVEMENT PLAN ZONING
PROPOSED
PREPARED FOR
MARINO CONSTRUCTION, LLC
#3 DEER MEADOW
EAST HAMPTON, CONNECTICUT
SCALE: 1"=20' - FEB. 27, 2022



JOEL M. FULLER
191 JONES HOLLOW ROAD
MARLBOROUGH, CONN. 06447
LICENSED LAND SURVEYOR
860-670-1800