

RT 16

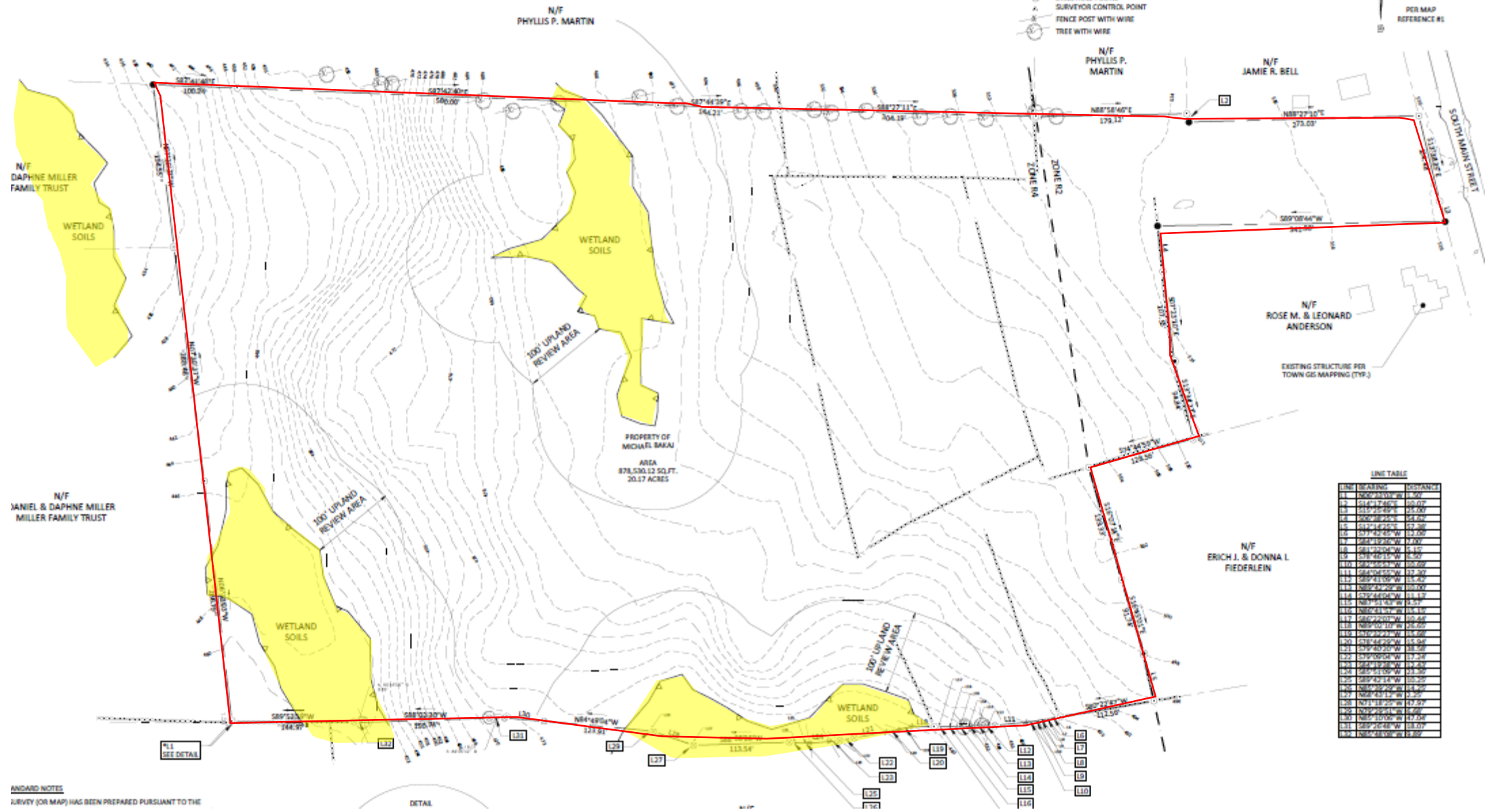
MFT

SITE

Tighe & Bond

RECEIVED
2.22.2022
East Hampton
Land Use Dept.

- PROPERTY LINE
- STONE WALL
- ZONE LINE
- WIRE FENCE REMAINS
- UTILITY POLE
- IRON PIN OR PIPE FOUND
- ANGLE POINT
- MONUMENT FOUND
- IRON PIN SET 5/8" REBAR
- DRILL HOLE SET
- DRILL HOLE FOUND
- SURVEYOR CONTROL POINT
- FENCE POST WITH WIRE
- TREE WITH WIRE



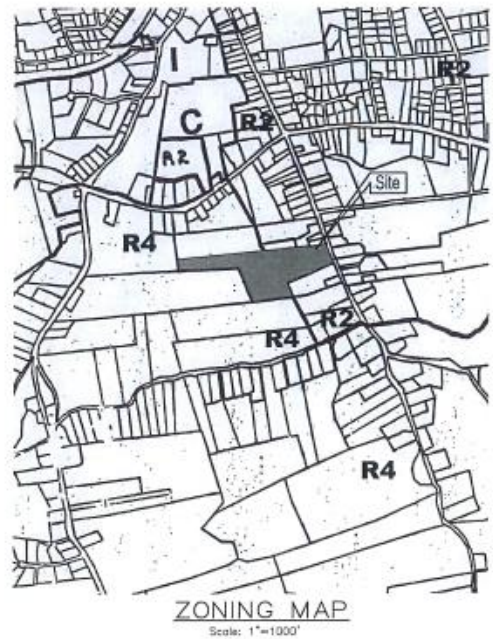
LINE TABLE

LINE NUMBER	BEARING	DISTANCE
1	N89°12'00"W	100.24
2	N89°12'00"W	100.24
3	N89°12'00"W	100.24
4	N89°12'00"W	100.24
5	N89°12'00"W	100.24
6	N89°12'00"W	100.24
7	N89°12'00"W	100.24
8	N89°12'00"W	100.24
9	N89°12'00"W	100.24
10	N89°12'00"W	100.24
11	N89°12'00"W	100.24
12	N89°12'00"W	100.24
13	N89°12'00"W	100.24
14	N89°12'00"W	100.24
15	N89°12'00"W	100.24
16	N89°12'00"W	100.24
17	N89°12'00"W	100.24
18	N89°12'00"W	100.24
19	N89°12'00"W	100.24
20	N89°12'00"W	100.24
21	N89°12'00"W	100.24
22	N89°12'00"W	100.24
23	N89°12'00"W	100.24
24	N89°12'00"W	100.24
25	N89°12'00"W	100.24
26	N89°12'00"W	100.24
27	N89°12'00"W	100.24
28	N89°12'00"W	100.24
29	N89°12'00"W	100.24
30	N89°12'00"W	100.24
31	N89°12'00"W	100.24
32	N89°12'00"W	100.24
33	N89°12'00"W	100.24
34	N89°12'00"W	100.24
35	N89°12'00"W	100.24
36	N89°12'00"W	100.24
37	N89°12'00"W	100.24
38	N89°12'00"W	100.24
39	N89°12'00"W	100.24
40	N89°12'00"W	100.24
41	N89°12'00"W	100.24
42	N89°12'00"W	100.24
43	N89°12'00"W	100.24
44	N89°12'00"W	100.24
45	N89°12'00"W	100.24
46	N89°12'00"W	100.24
47	N89°12'00"W	100.24
48	N89°12'00"W	100.24
49	N89°12'00"W	100.24
50	N89°12'00"W	100.24
51	N89°12'00"W	100.24
52	N89°12'00"W	100.24
53	N89°12'00"W	100.24
54	N89°12'00"W	100.24
55	N89°12'00"W	100.24
56	N89°12'00"W	100.24
57	N89°12'00"W	100.24
58	N89°12'00"W	100.24
59	N89°12'00"W	100.24
60	N89°12'00"W	100.24
61	N89°12'00"W	100.24
62	N89°12'00"W	100.24
63	N89°12'00"W	100.24
64	N89°12'00"W	100.24
65	N89°12'00"W	100.24
66	N89°12'00"W	100.24
67	N89°12'00"W	100.24
68	N89°12'00"W	100.24
69	N89°12'00"W	100.24
70	N89°12'00"W	100.24
71	N89°12'00"W	100.24
72	N89°12'00"W	100.24
73	N89°12'00"W	100.24
74	N89°12'00"W	100.24
75	N89°12'00"W	100.24
76	N89°12'00"W	100.24
77	N89°12'00"W	100.24
78	N89°12'00"W	100.24
79	N89°12'00"W	100.24
80	N89°12'00"W	100.24
81	N89°12'00"W	100.24
82	N89°12'00"W	100.24
83	N89°12'00"W	100.24
84	N89°12'00"W	100.24
85	N89°12'00"W	100.24
86	N89°12'00"W	100.24
87	N89°12'00"W	100.24
88	N89°12'00"W	100.24
89	N89°12'00"W	100.24
90	N89°12'00"W	100.24
91	N89°12'00"W	100.24
92	N89°12'00"W	100.24
93	N89°12'00"W	100.24
94	N89°12'00"W	100.24
95	N89°12'00"W	100.24
96	N89°12'00"W	100.24
97	N89°12'00"W	100.24
98	N89°12'00"W	100.24
99	N89°12'00"W	100.24
100	N89°12'00"W	100.24

STANDARD NOTES
 SURVEY (OR MAP) HAS BEEN PREPARED PURSUANT TO THE

DETAIL

DATE



BELLTOWN PLACE

A TOWNHOUSE COMMUNITY

Located At
37 SOUTH MAIN STREET
 In The
TOWN OF EAST HAMPTON
MIDDLESEX COUNTY, CONNECTICUT

Assessor's Map 20, Block 51, Lot 27
 R2 & R4 Zoning Districts

Applicant
PELLETIER DEVELOPMENT CO., LLC
 3011 Main Street
 Glastonbury, CT 06033
 Tel. 860-659-8339 FAX: 860-657-9612

Engineer / Surveyor:
DUTTON ASSOCIATES, LLC
 67 Eastern Boulevard
 Glastonbury, CT 06033
 Tel. 860-633-9401 FAX: 860-633-8851
 Email: DUTJONLLC@AOL.COM

Environmental Consultant
REMA ECOLOGICAL SERVICES, LLC
 164 EastCenter Street - Suite 2
 Manchester, CT 06040
 Tel. 860-649-7362 FAX: 860-647-8397
 Email: REMA8@AOL.COM



DRAWINGS INDEX

DWG No.	TITLE	SHEET No.
S-01	COVER SHEET & INDEX	1 OF 17
S-02	NOTES, LEGEND & ABBREVIATIONS	2 OF 17
S-03	EXISTING CONDITIONS & BOUNDARY PLAN	3 OF 17
S-04	OVERALL SITE LAYOUT PLAN	4 OF 17
S-05	INITIAL PHASE SESC PLAN	5 OF 17
S-06	TOPOGRAPHIC, GRADING & UTILITY PLAN-1	6 OF 17
S-07	TOPOGRAPHIC, GRADING & UTILITY PLAN-2	7 OF 17
S-08	PLAN & PROFILE SHEET 1	8 OF 17
S-09	PLAN & PROFILE SHEET 2	9 OF 17
S-10	PLAN & PROFILE SHEET 3	10 OF 17
S-11	STORMWATER MANAGEMENT DETAIL PLAN	11 OF 17
S-12	CONSTRUCTION DETAILS SHEET 1	12 OF 17
S-13	CONSTRUCTION DETAILS SHEET 2	13 OF 17
S-14	CONSTRUCTION DETAILS SHEET 3	14 OF 17

2007

APPROVED BY THE EAST HAMPTON PLANNING AND ZONING COMMISSION

FINAL APPROVAL: _____ (CHAIRMAN)
 DATE: _____

APPROVED BY THE EAST HAMPTON PLANNING & ZONING COMMISSION

FINAL APPROVAL: _____ (CHAIRMAN)
 DATE: _____

EXPIRATION DATE: _____

PER SECTION 8-26c OF THE CONNECTICUT GENERAL STATUTES, AS AMENDED, APPROVAL AUTOMATICALLY EXPIRES IF ALL PHYSICAL IMPROVEMENTS REQUIRED BY THIS PLAN ARE NOT COMPLETED BY THAT DATE.

THE SUBDIVISION REGULATIONS OF THE EAST HAMPTON PLANNING AND ZONING COMMISSION ARE A PART OF THIS PLAN. APPROVAL OF THIS PLAN IS CONTINGENT ON COMPLETION OF THE REQUIREMENTS OF SAID REGULATIONS, EXCEPTING ANY VARIANCES OR MODIFICATIONS MADE BY THE COMMISSION. ANY SUCH VARIANCES OR MODIFICATIONS ARE ON FILE IN THE OFFICE OF THE COMMISSION.

DUTTON ASSOCIATES, LLC
 LAND SURVEYORS AND CIVIL ENGINEERS
 67 EASTERN BOULEVARD
 GLASTONBURY, CONNECTICUT 06033
 TEL: 860-633-9401 FAX: 860-633-8851
 EMAIL: DUTJONLLC@AOL.COM

NOTICE: THESE DOCUMENTS ARE PROTECTED UNDER A COPYRIGHT. SHOULD THESE DRAWINGS OR ANY INFORMATION CONTAINED HEREON BE REPRODUCED OR TRANSMITTED IN ANY FORM OR BY ANY MEANS, WITHOUT THE WRITTEN PERMISSION OF THE ENGINEER, THESE DRAWINGS SHALL REMAIN THE PROPERTY OF THE ENGINEER.

REVISIONS		
LTN	DESCRIPTION	DATE

COVER SHEET & INDEX
BELLTOWN PLACE
 A Townhouse Community
 PREPARED FOR
Pelletier Development Co., LLC
 FOR PROPERTY LOCATED AT
 South Main Street
 TOWN OF EAST HAMPTON CONNECTICUT

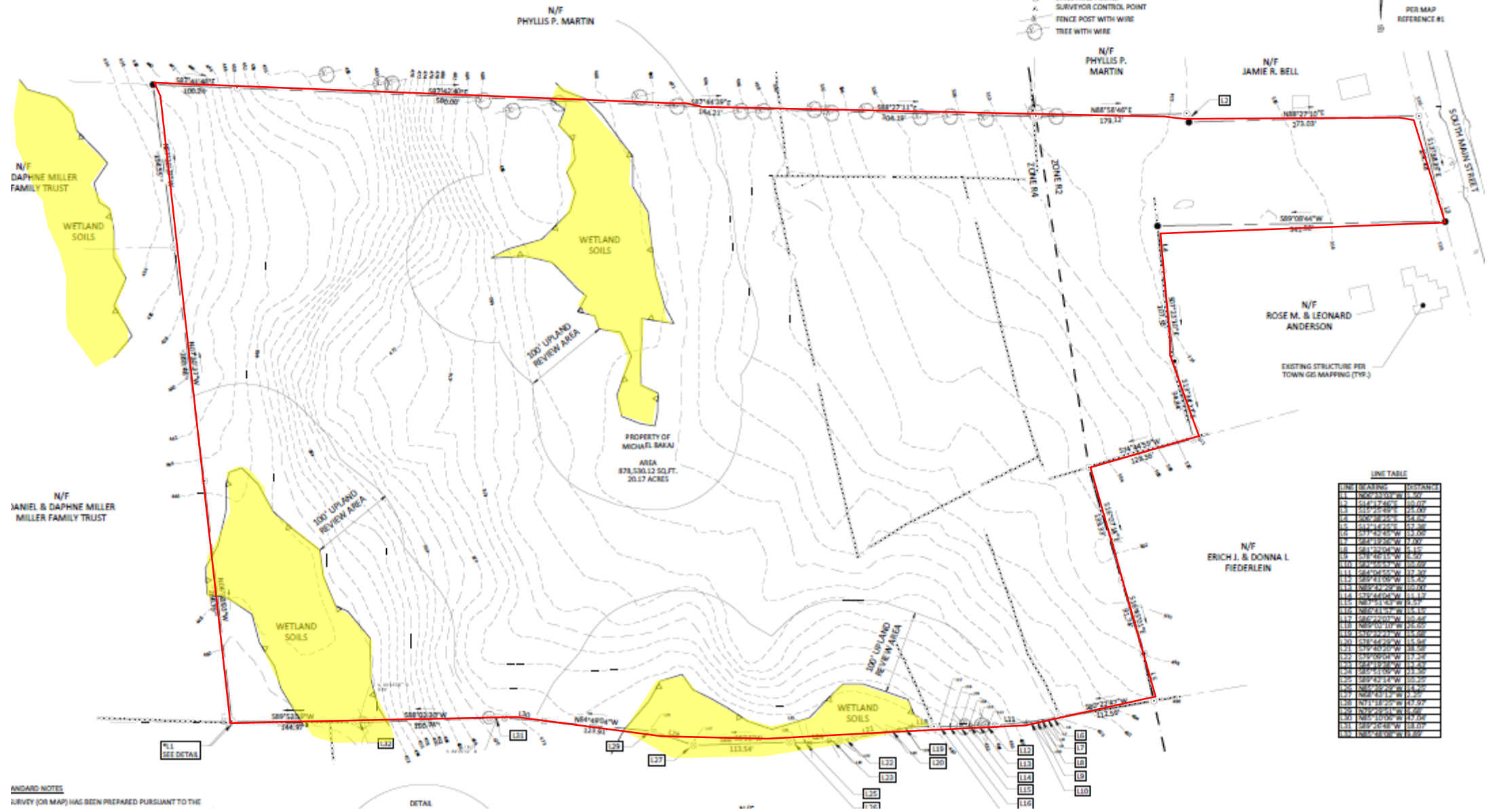
Sheet No.
S-01
 SHEET 1 OF 14
 Scale: NO SCALE
 Date: NOV 01, 2007
 Project No: 07078-PELLETIER



129 UNITS

2009

- PROPERTY LINE
- STONE WALL
- ZONE LINE
- WIRE FENCE REMAINS
- UTILITY POLE
- IRON PIN OR PIPE FOUND
- ANGLE POINT
- MONUMENT FOUND
- IRON PIN SET 5/8" REBAR
- DRILL HOLE SET
- DRILL HOLE FOUND
- SURVEYOR CONTROL POINT
- FENCE POST WITH WIRE
- TREE WITH WIRE



LINE TABLE

LINE NUMBER	BEARING	DISTANCE
1	S89°12'00"W	100.24
2	S89°12'00"W	100.24
3	S89°12'00"W	100.24
4	S89°12'00"W	100.24
5	S89°12'00"W	100.24
6	S89°12'00"W	100.24
7	S89°12'00"W	100.24
8	S89°12'00"W	100.24
9	S89°12'00"W	100.24
10	S89°12'00"W	100.24
11	S89°12'00"W	100.24
12	S89°12'00"W	100.24
13	S89°12'00"W	100.24
14	S89°12'00"W	100.24
15	S89°12'00"W	100.24
16	S89°12'00"W	100.24
17	S89°12'00"W	100.24
18	S89°12'00"W	100.24
19	S89°12'00"W	100.24
20	S89°12'00"W	100.24
21	S89°12'00"W	100.24
22	S89°12'00"W	100.24
23	S89°12'00"W	100.24
24	S89°12'00"W	100.24
25	S89°12'00"W	100.24
26	S89°12'00"W	100.24
27	S89°12'00"W	100.24
28	S89°12'00"W	100.24
29	S89°12'00"W	100.24
30	S89°12'00"W	100.24
31	S89°12'00"W	100.24
32	S89°12'00"W	100.24
33	S89°12'00"W	100.24
34	S89°12'00"W	100.24
35	S89°12'00"W	100.24
36	S89°12'00"W	100.24
37	S89°12'00"W	100.24
38	S89°12'00"W	100.24
39	S89°12'00"W	100.24
40	S89°12'00"W	100.24
41	S89°12'00"W	100.24
42	S89°12'00"W	100.24
43	S89°12'00"W	100.24
44	S89°12'00"W	100.24
45	S89°12'00"W	100.24
46	S89°12'00"W	100.24
47	S89°12'00"W	100.24
48	S89°12'00"W	100.24
49	S89°12'00"W	100.24
50	S89°12'00"W	100.24
51	S89°12'00"W	100.24
52	S89°12'00"W	100.24
53	S89°12'00"W	100.24
54	S89°12'00"W	100.24
55	S89°12'00"W	100.24
56	S89°12'00"W	100.24
57	S89°12'00"W	100.24
58	S89°12'00"W	100.24
59	S89°12'00"W	100.24
60	S89°12'00"W	100.24
61	S89°12'00"W	100.24
62	S89°12'00"W	100.24
63	S89°12'00"W	100.24
64	S89°12'00"W	100.24
65	S89°12'00"W	100.24
66	S89°12'00"W	100.24
67	S89°12'00"W	100.24
68	S89°12'00"W	100.24
69	S89°12'00"W	100.24
70	S89°12'00"W	100.24
71	S89°12'00"W	100.24
72	S89°12'00"W	100.24
73	S89°12'00"W	100.24
74	S89°12'00"W	100.24
75	S89°12'00"W	100.24
76	S89°12'00"W	100.24
77	S89°12'00"W	100.24
78	S89°12'00"W	100.24
79	S89°12'00"W	100.24
80	S89°12'00"W	100.24
81	S89°12'00"W	100.24
82	S89°12'00"W	100.24
83	S89°12'00"W	100.24
84	S89°12'00"W	100.24
85	S89°12'00"W	100.24
86	S89°12'00"W	100.24
87	S89°12'00"W	100.24
88	S89°12'00"W	100.24
89	S89°12'00"W	100.24
90	S89°12'00"W	100.24
91	S89°12'00"W	100.24
92	S89°12'00"W	100.24
93	S89°12'00"W	100.24
94	S89°12'00"W	100.24
95	S89°12'00"W	100.24
96	S89°12'00"W	100.24
97	S89°12'00"W	100.24
98	S89°12'00"W	100.24
99	S89°12'00"W	100.24
100	S89°12'00"W	100.24

STANDARD NOTES
 SURVEY (OR MAP) HAS BEEN PREPARED PURSUANT TO THE

DETAIL

1:1
 SEE DETAIL



N/F
PHYLLIS P. MARTIN

N/F
PHYLLIS P.
MARTIN

N/F
JAMIE R. BELL

SOUTH MAIN STREET

N/F
NIEL & DAPHNE MILLER
MILLER FAMILY TRUST

WETLAND
SOILS

PROPERTY OF
MICHAEL BAKAI
AREA
878,530.12 SQ.FT.
20.17 ACRES

WETLAND
SOILS

ZONE R2
ZONE R4

N/F
ROSE M. & LEONARD
ANDERSON

EXISTING STRUCTURE PER
TOWN GIS MAPPING (TYP.)

N/F
DANIEL & DAPHNE MILLER
MILLER FAMILY TRUST

WETLAND
SOILS

WETLAND
SOILS

N/F
ERICH J. & DONNA L.
FIEDERLEIN

N/F
JACQUELYN L. REARDON
1" = 60'



- LEGEND**
- PROPERTY LINE
 - BUILDING SETBACK LINE
 - ZONE LINE
 - STONE WALL
 - CLEARING LIMIT
 - EXISTING CONTOUR
 - PROPOSED CONTOUR
 - PROPOSED UNDERGROUND UTILITIES
 - PROPOSED SANITARY FORCE MAIN
 - ANGLE POINT
 - IRON PIN OR PINE FOUND
 - MONUMENT FOUND
 - IRON PIN TO BE SET
 - MONUMENT TO BE SET
 - UTILITY POLE
 - SANITARY SEWER MANHOLE
 - WASTEWATER PUMP - SANITARY SEWER
 - VALVE BOX - SANITARY SEWER

**WETLAND
AREA**



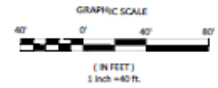
APPROVED
PLANNING AND ZONING
COMMISSION
EAST HAMPTON, CT

DATE: _____

SIGNED: _____

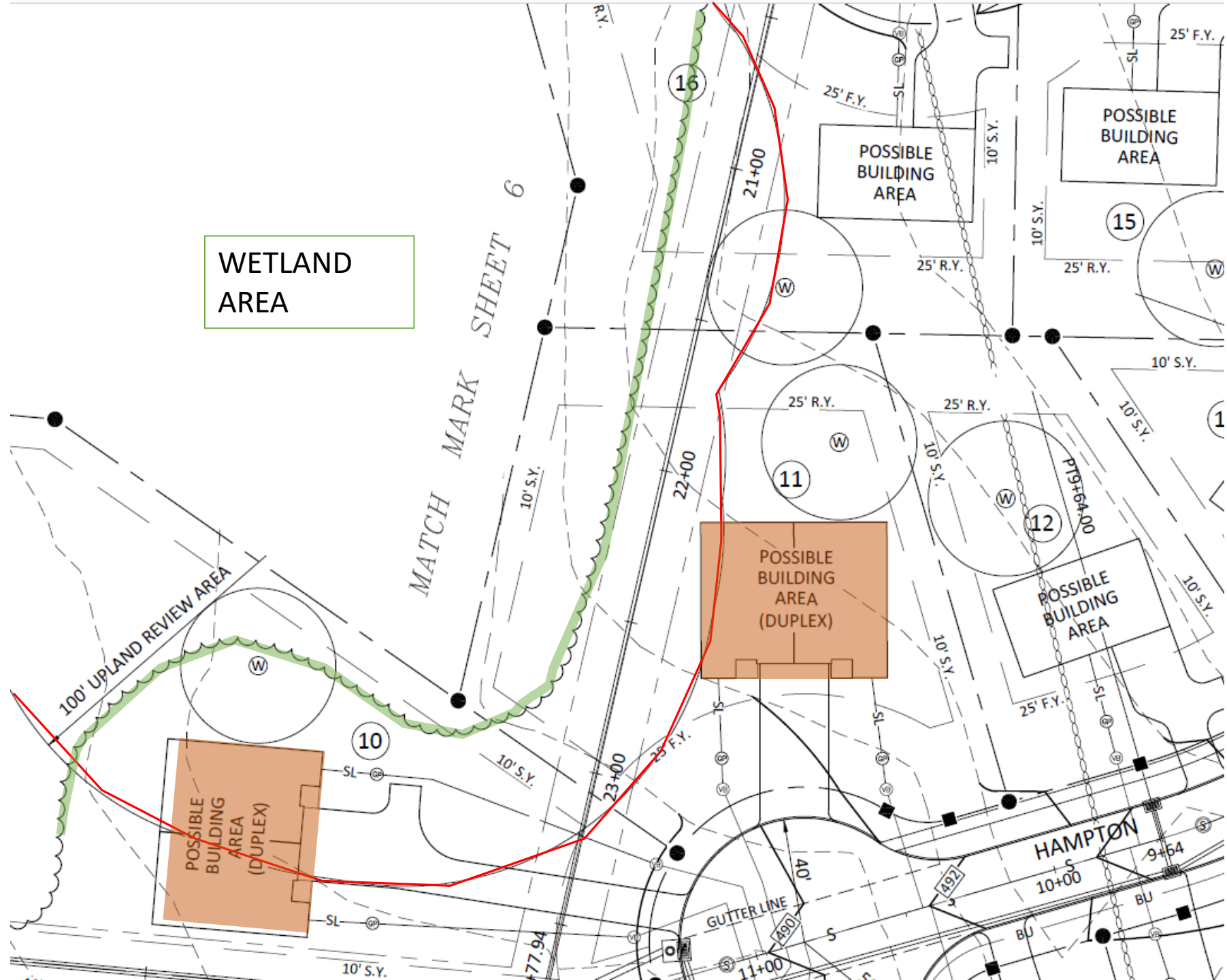
ROB HELLSTROM
LAND SURVEYING LLC
101 MAIN STREET
HARTFORD, CT, 06118
(860) 264-9126
hellstromsurveying@gmail.com
www.hellstromsurveying.com

Scale: 1" = 40'
EAST HAMPTON, CT 06418
P.O. BOX 398
HARTFORD, CT 06118



<p>CIVIL ENGINEERING CONSULTANTS 65 WOODCHURCH AVENUE COLCHESTER, CT 06032</p> <p>RES Reynolds Engineering Services, LLC</p>	<p>DATE: 7/26/2023</p> <p>SCALE: 1"=40'</p> <p>PROJECT: TOPOGRAPHIC MAP</p> <p>PREPARED BY: HAJAJ CONSTRUCTION LLC</p> <p>BY: HAJAJ CONSTRUCTION LLC</p> <p>DATE: 7/26/2023</p>
---	---

WETLAND
AREA





N/F
PHYLLIS P. MARTIN

N/F
PHYLLIS P.
MARTIN

N/F
JAMIE R. BELL

N/F
NIEL & DAPHNE MILLER
MILLER FAMILY TRUST

PROPERTY OF
MICHAEL BAKAI
AREA
878,530.12 SQ.FT.
20.17 ACRES

WETLAND
SOILS

WETLAND
SOILS

SOUTH MAIN STREET

N/F
ROSE M. & LEONARD
ANDERSON

EXISTING STRUCTURE PER
TOWN GIS MAPPING (TYP.)

N/F
DANIEL & DAPHNE MILLER
MILLER FAMILY TRUST

WETLAND
SOILS

N/F
ERICH J. & DONNA L.
FIEDERLEIN

WETLAND
SOILS

N/F
JACQUELYN L. REARDON
1" = 60'

