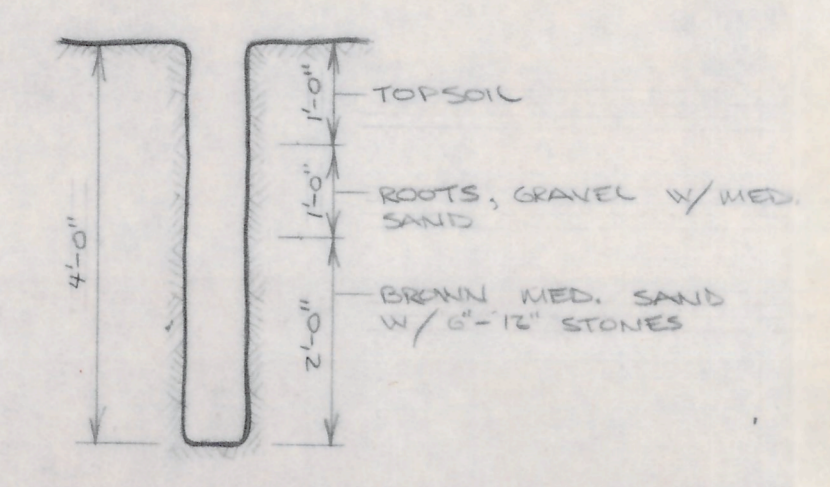
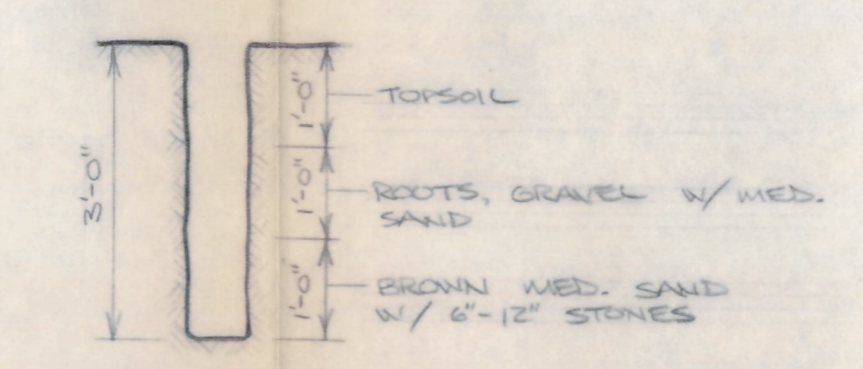


**LEGEND**

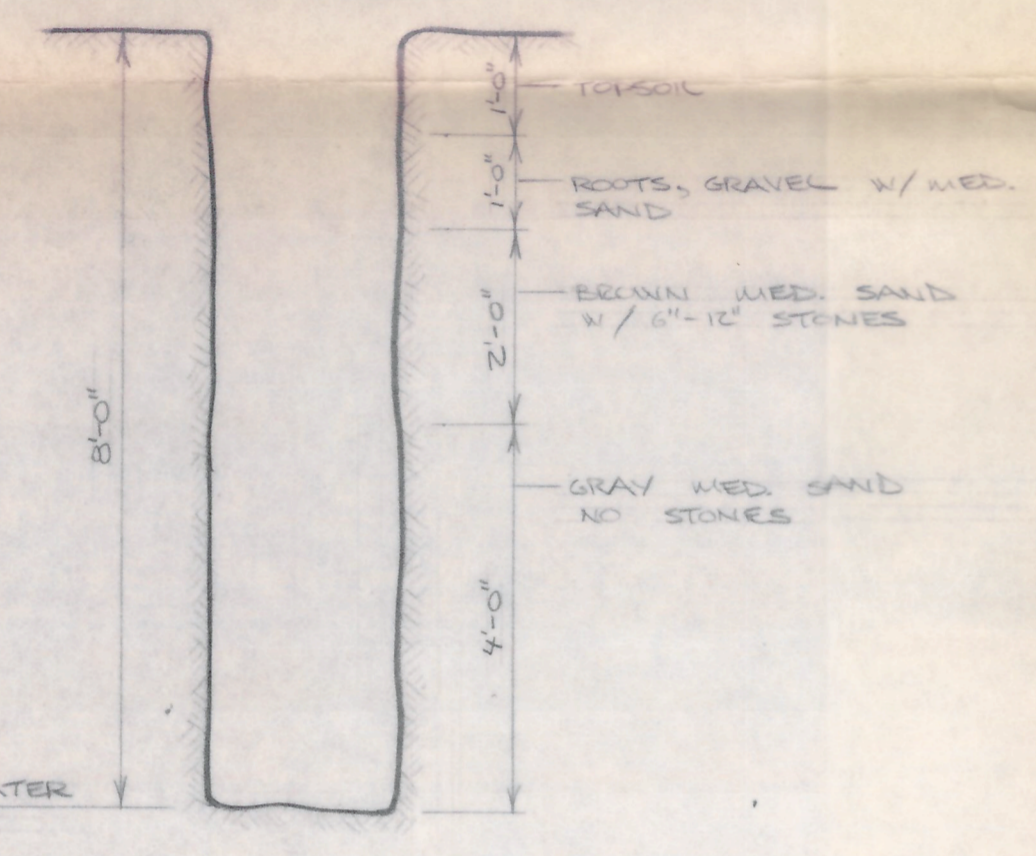
- 100--- EXISTING CONTOUR LINE
- 100--- PROPOSED CONTOUR LINE
- EXISTING EDGE OF PAVEMENT
- PROPERTY LINE
- WOOD BOARD FENCE
- CHD. MONUMENT
- △ TRAVERSE POINT
- MANHOLE
- CATCH BASIN
- ⊕ TELEPHONE OR ELECTRIC POLE
- ⊕ PERCUSSION TEST PIT
- ⊕ OBSERVATION HOLE



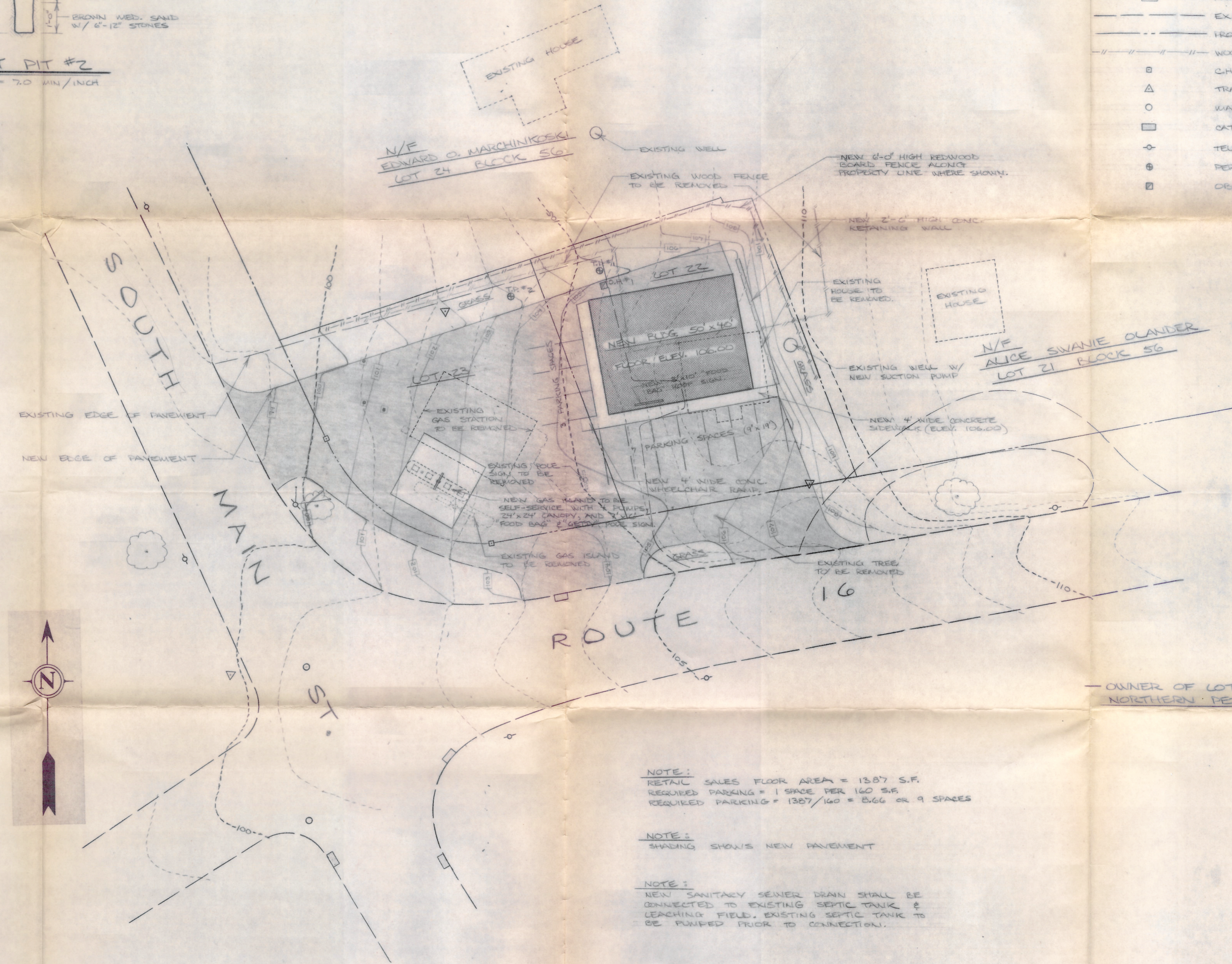
**TEST PIT #1**  
RATE = 8.0 MIN/INCH



**TEST PIT #2**  
RATE = 7.0 MIN/INCH



**OBSERVATION HOLE #1**



**NOTE:**  
RETAIL SALES FLOOR AREA = 1387 S.F.  
REQUIRED PARKING = 1 SPACE PER 160 S.F.  
REQUIRED PARKING = 1387/160 = 8.66 OR 9 SPACES

**NOTE:**  
SHADING SHOWS NEW PAVEMENT

**NOTE:**  
NEW SANITARY SEWER DRAIN SHALL BE CONNECTED TO EXISTING SEPTIC TANK & LEACHING FIELD. EXISTING SEPTIC TANK TO BE PUMPED PRIOR TO CONNECTION.

OWNER OF LOTS 22 AND 23  
NORTHERN PETROLEUM INC.

**SITE PLAN**

<b>RETAIL OUTLET</b> SOUTH MAIN ST. AND ROUTE 16 EAST HAMPTON, CONN. FOR FOOD BAG INC.		
<b>HEWITT ENGINEERING, P.C.</b> CONSULTING ENGINEERS BERLIN, CONN.		
DATE <b>FEBRUARY 17, 1976</b>	SCALE <b>1" = 20'-0"</b>	PROJECT NO. <b>7512</b>
DRAWN BY <b>B.A.</b>	CHECKED BY <b>R.H.</b>	SHEET NO. <b>1 of 1</b>

REVISED - FEBRUARY 18, 1976 (B.A.)