

Symbol	Quantity	PLANT LIST - UPLAND AREAS	Planting	Mature	Maturity
		Symbol	Size	Size	Time
TO	55	THILIA OCCIDENTALIS 'NIGRA'	4'-5' height	20'x20'w	8-10 yrs
CK	2	Dark American Arborvitae	8'x8'		
CK	2	CORNUS KUSA	4'-5' height	8'x12'w	5-7 yrs
PA	15	WESTERN DOGWOOD	1 gallon	2'x2'w	1 yr
LA	18	DEER FOUNTAIN GRASS 'HAMELI'	18" x 21"	6'x3'w	3 yrs
RS	14	COAST LEUCODENDRON	5'-6' height	80'x40'w	8-10 yrs
		White Pine	8'x8'		

PLANTING NOTES

ALL MATERIALS AND CONSTRUCTION METHODS ARE TO CONFORM TO THE REQUIREMENTS OF THE CT ASSOCIATION OF LANDSCAPE CONTRACTORS SPECIFICATIONS AND THE AMERICAN NURSERYMAN'S STANDARDS FOR NURSERY STOCK.

ALL TREE STAKING OR GUTTING IS TO BE DONE IMMEDIATELY AFTER PLANTING, BUT IN NO CASE MORE THAN 24 HOURS AFTER PLANTING. AT COMPLETION OF MAINTENANCE PERIOD, REMOVE ALL STAKES, FLAGS, GUTS, TREE WRAP AND ANCHORS.

THERE SHALL BE NO LANDSCAPING SPECIES PLANTED THAT ARE LISTED ON THE CONNECTICUT INVASIVE PLANT LIST.

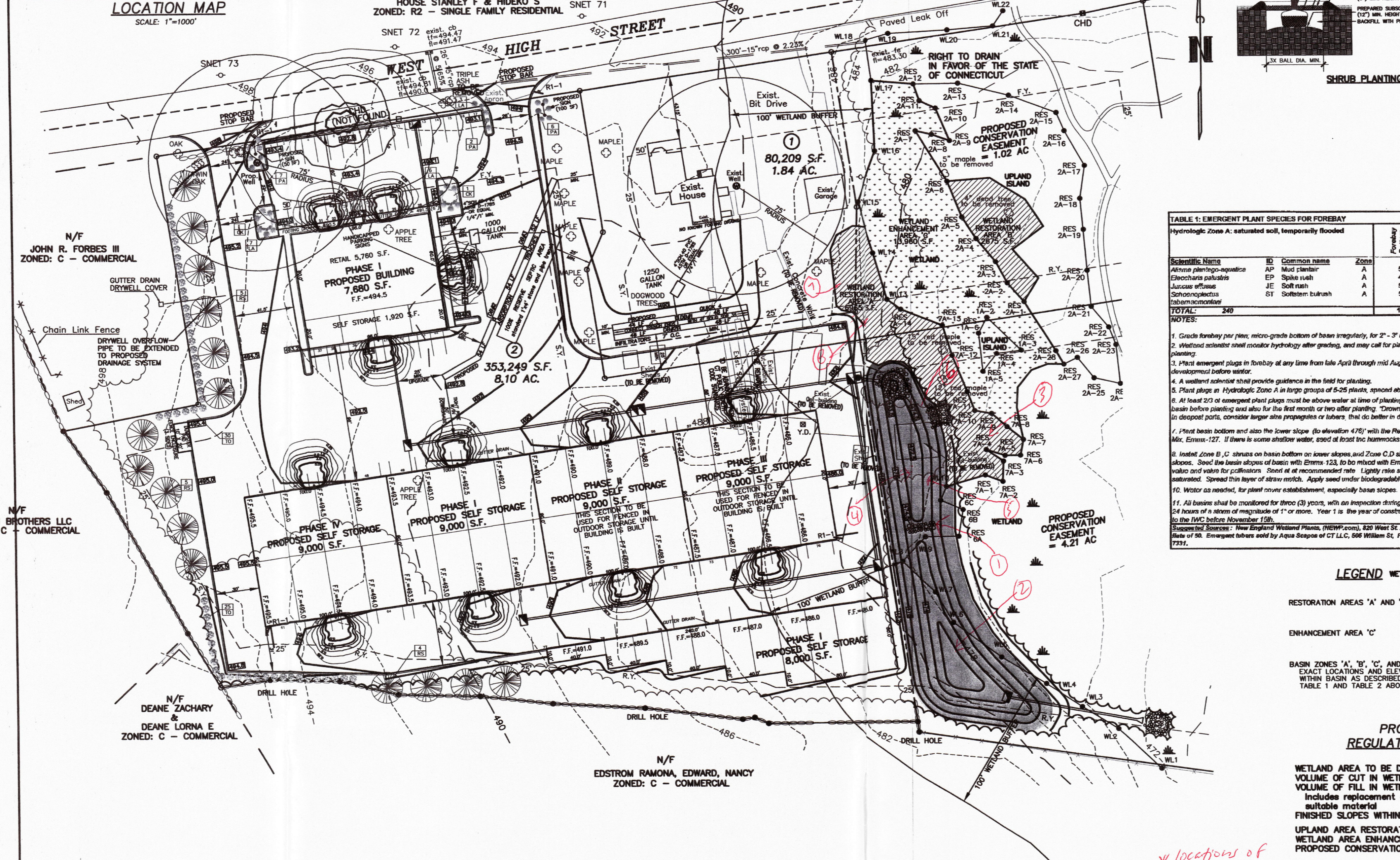
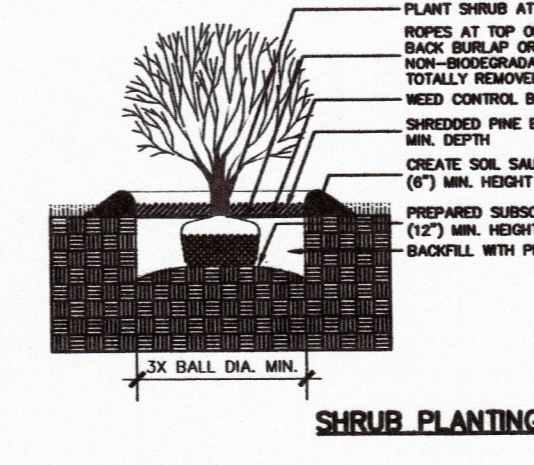
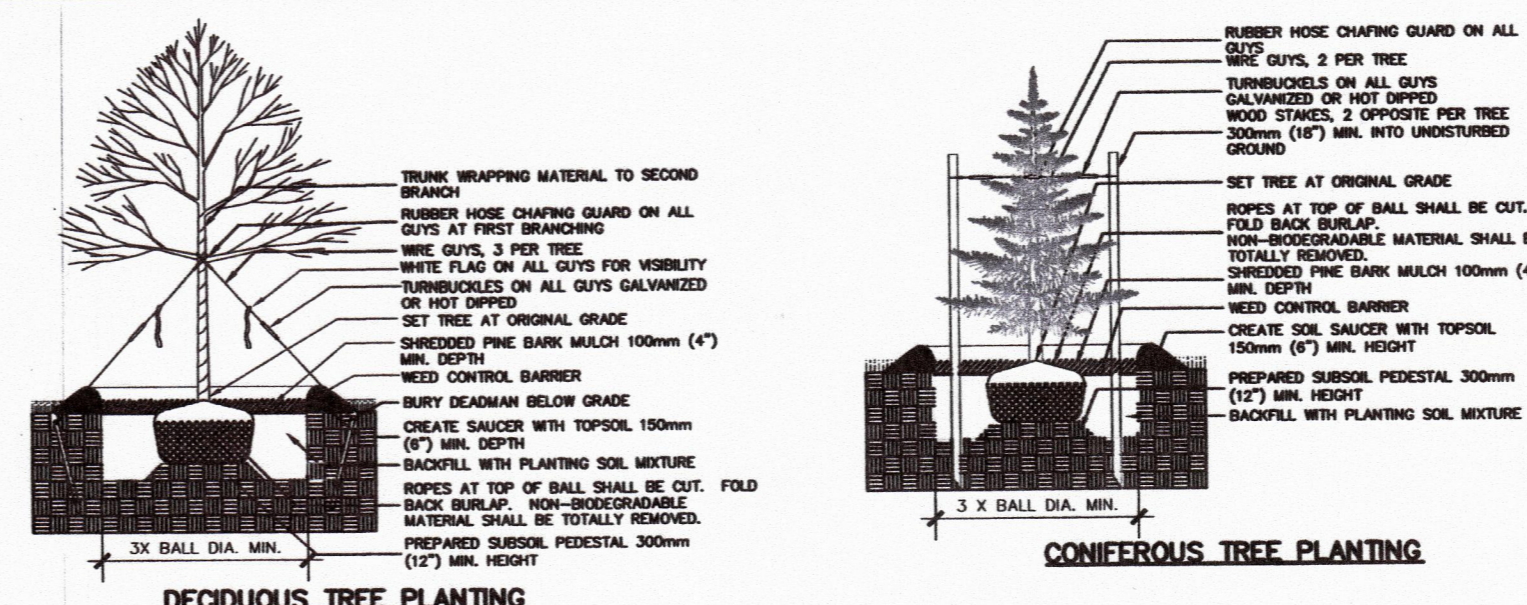


Table 2: MITIGATION PLANTING MATERIALS, WEST HIGH STREET, EAST HAMPTON, CONNECTICUT

Zone	Plant Name	Code	Zone	Plant Name	Code	Zone	Plant Name	Code
Zone A	Gray dogwood	GR	Zone B	Black chokeberry	AM	Zone C	Black chokeberry	AM
	Black chokeberry	AM		Sweet pepper shrub	CA		Sweet pepper shrub	CA
	Sweet pepper shrub	CA		Filly dogwood	CAM		Filly dogwood	CAM
	Filly dogwood	CAM		Winterberry	IV		Winterberry	IV
	Winterberry	IV		Common elderberry	BC		Common elderberry	BC
	Common elderberry	BC		Highbush blueberry	VC		Highbush blueberry	VC
	Highbush blueberry	VC		Spicebush	LB		Spicebush	LB
	Spicebush	LB		Willow	VE		Willow	VE
	Willow	VE		Arrowwood	VD		Arrowwood	VD
	Arrowwood	VD		Norway spruce	VL		Norway spruce	VL
Zone D	Shadblow	AC	Zone E	Red cedar	JV	Zone F	Red cedar	JV
	Red cedar	JV		Choke cherry	PV		Choke cherry	PV
	Choke cherry	PV		Sheep's w. flow	SS		Sheep's w. flow	SS
	Sheep's w. flow	SS		Pussy willow	PS		Pussy willow	PS
	Pussy willow	PS		Green ash	EP		Green ash	EP
	Green ash	EP		White pine	WP		White pine	WP
	White pine	WP		Virginia creeper	PO		Virginia creeper	PO
	Virginia creeper	PO		Summit Hill Nurseries	SHN		Summit Hill Nurseries	SHN
	Summit Hill Nurseries	SHN		Summit Hill Nurseries	SHN		Summit Hill Nurseries	SHN
	Summit Hill Nurseries	SHN		Summit Hill Nurseries	SHN		Summit Hill Nurseries	SHN

NOTES (FOR TABLE 2):

1. Excavate 4-10 inches of fill or soil from Restoration Areas "A" and "B". Very few trees remain in these areas, but take care when excavating around remaining trees. Leave fill islands along major tree rows. Elsewhere leave two 15 to 25 ft spaced mounds per 400 sq ft, and plant with Zone B, C tree and/or shrubs. Spread fallen logs and branches (5% cover) over mitigation areas, if not already present.
2. Wetland scientist shall monitor hydrology after grading, and may call for plan adjustments prior to planting. Locations of shrub clusters may be adjusted based on observations.
3. Remove invasive shrubs and vines from Wetland Enhancement Area "C". Hand pull some plants for larger plants use the "cut and pull" method, applying 4% herbicide to cut stems within two minutes of cutting. Herbicide may be applied in May and June or in August and September. Dispose of removed invasive material outside mitigation areas and wetlands.
4. Spread mulch after a two inch thick layer of mulch over all mitigation areas, being care not to match soil existing wetlands and fence. Plant groupings of trees in late spring to early summer or in late summer to early fall. (Mulchwood seeding is not recommended due to the risk of introducing populations of insects or other organisms - genetic problems).
5. Order woody plantings and ferns (spotted materials in 1-3 gallon pots) at least three weeks ahead of time and obtain permission for substitutions. Store in shade, water, and plant as soon as possible.
6. A wetland scientist shall provide guidance in the field for planting.
7. Place shrubs and trees per mitigation plan (with allowance to adjust locations per observed hydrology). In mitigation wetlands shrubs in some species shrub groupings are to be spaced four to six feet apart.
8. On basin bottom side slopes, and berms, plant shrubs in zones per table in groups of two to four, evenly spaced.
9. Dig concrete holes for woody plantings, and include slow release fertilizer (Osmocote or equivalent), in planting hole. 1-inch spacers (2.5" diameter) around shrubs and trees to hold rainfall and irrigation water (if needed). For first three months, water plantings on basin slopes weekly in absence of rain, and wetland plantings if soil in wetlands is no longer moist.
10. Monitor for deer browsing; if necessary, install deer fence around the mitigation area or a deer repellent throughout the mitigation area. Control invasives (pulling weeds) for three (3) years.
11. A narrative monitoring report shall be submitted to the East Hampton Inland Wetlands Agency by November 15th, for three years following installation, covering plantings success, colonization, wildlife utilization, ferns in wetland area, invasives removal, & hydrology. Less than 75% plantings success will trigger remedial measures, such as replacement plantings to 100% of original planting.

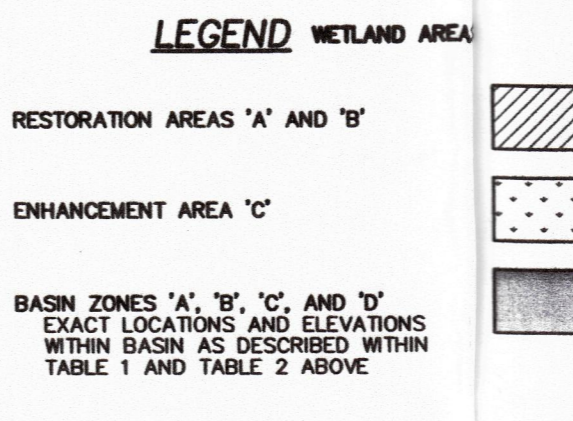
TABLE 1: EMERGENT PLANT SPECIES FOR FOREBAY

Scientific Name	Common Name	Zone	Frequency	Abundance
Alysicarpus alpinus	Alfalfa	A	40	0
Echinochloa polystachya	SP Spike tuft	A	50	0
Lycopus lucidus	JEF Soft rush	A	50	0
Sclerostachya	ST Softstem bulrush	A	50	0
TOTAL			190	0

NOTES:

1. Grade forebay per plan, micro-grade bottom of basin irregularly, for 2" - 3" microtopographic variation.
2. Wetland scientist shall monitor hydrology after grading, and may call for plan adjustments prior to planting.
3. Plant emergent plugs in forebay at any time from late April through mid August, to allow for development before winter.
4. A wetland scientist shall provide guidance in the field for planting.
5. Plant plugs in Hydrologic Zone A in large groups of 25 plants, spaced about 2' apart on either side.
6. At least 2/3 of emergent plant plugs must be above water at time of planting. If necessary, plant plugs in areas below water for the first month or two after planting. "Drowned" emergent plugs in the disposal ponds, consider larger size plugs or larger, that do better in deeper water than 30" plugs.
7. First basin bottom and also the lower slope (to elevation 470') with the Pawcatuck Basin Wetlands Study Map, ERM-122. If there is some shallow water, end of basin two herbaceous and of species.
8. Install Zone B, C shrubs on basin bottom on lower slopes, and Zone C, D shrubs on mid and upper slopes. Seed the basin slopes of basin with ERM-123, to be mixed with ERM-122 to firm within weeks and water for cultivation. Seed at recommended rate. Lightly rake seed into soil, unless it is indicated. Spread this layer of straw mulch. Apply seed under biodegradable matting if slope is > 3:1.
10. Water as needed, for plant cover establishment, especially basin slopes.
11. All basins shall be monitored for three (3) years, with an inspection during the growing season, within 24 hours of a storm of magnitude of 1" or more. Year 1 is the year of construction. A report shall be sent to the EMC before November 15th.

Source: *Wetland Wetland Plants*, (NHP-200), 820 West St. Amherst, Massachusetts page 10 of 98. Emergent tubers sold by Aqua Scapes of CT LLC, 606 William St., Portland, CT. Phone: 860-343-7224.

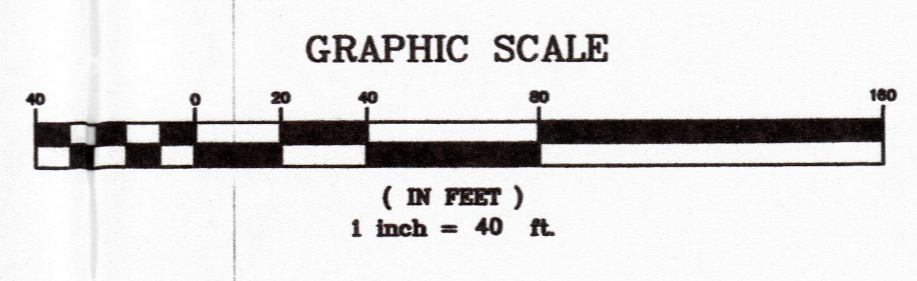


PROPOSED REGULATED ACTIVITY

WETLAND AREA TO BE DISTURBED: 4,044 SF
 VOLUME OF CUT IN WETLAND: 115 CY
 VOLUME OF FILL IN WETLAND: 90 CY

INCLUDES REPLACEMENT OF CUT WITH SUITABLE MATERIAL
 FINISHED SLOPES WITHIN WETLAND: 3:1 (HOR:VERT)

UPLAND AREA RESTORATION: 9,640 SF
 WETLAND AREA ENHANCEMENT: 13,960 SF
 PROPOSED CONSERVATION EASEMENT: 5.23 ACRES



OWNER/DEVELOPER:
 WEST HIGH ENTERPRISES, LLC
 244 MIDDLETOWN AVENUE
 EAST HAMPTON, CT. 06424

Per Section 8-28c of the Connecticut General Statutes, as amended, approval automatically expires on [] if all physical improvements required by this plan are not completed by that date.

The Subdivision Regulations of the East Hampton Planning & Zoning Commission are a part of this plan. Approval of this plan is contingent on completion of the requirements of said regulations, accepting any variances or modifications made by the Commission. Any such variances or modifications are on file in the office of the Commission.

THE BEST OF ANY KNOWLEDGE AND IS SUBSTANTIALLY CORRECT.

CHATHAM ENGINEERING INC.
 CONSULTING ENGINEERS
 244 MIDDLETOWN AVENUE
 EAST HAMPTON, CONN. 06424
 PHONE (860)-287-6823

LANDSCAPE PLAN
195 WEST HIGH STREET SUBDIVISION
 PREPARED FOR
WEST HIGH ENTERPRISES, LLC
 EAST HAMPTON, CONN.

CK. BY: DWE
 DRW. BY: DWE
 DATE: 1-10-12
 SCALE: 1" = 40'
 SHEET 4 OF 8
 MAP NO. 052-12-1L

REV 5/16/12
 REV 5/18/12
 REV 5/22/12

Wayne Rand
(860) 267-6623

----- Original Message -----

From: Wayne Rand <waynerand@comcast.net>

To: cficaacelli@pridescorner.com

Date: June 14, 2017 at 12:18 PM

Subject: 201 West High Mitigation Planting Materials

Carol,

Good Afternoon, Attached is the list of aquatic plants needed for our project in East Hampton per our discussion.

Thank you,

Donna Harvey

Wayne Rand
(860) 267-6623

- order Wayne Rand.rtf (26 KB)

Carol Ficarelli <cficarelli@pridescorner.com>

6/15/2017 2:48 PM

RE: Fwd: 201 West High Mitigation Planting Materials

To Wayne Rand <waynerand@comcast.net>

Good afternoon Donna,

Attached is the list you gave me and any substitutions. Sorry, no salix bobbii or fraxinus pensylvanica. Subbed viburnum trilobum for viburnum cassinoides. Once the order is in, I send it to be want we call 'blessed'... making sure that Lebanon has the quantity required of any of the items. We would bring them here from there and then either for pick up or delivery from Cromwell. (Lebanon has large quantities...they have 500 acres!) so all is subject to availability. Delivery would be \$500 to East Hampton...you would just need to let me know what day and time someone will be there to off-load.

Any questions or changes do not hesitate to contact me. Let me know if this is a go.

Thank you for the opportunity!

Carol

Carol Ficarelli

Sales Representative

860-468-0519(office) 860-333-7404(cell)

CFicarelli@pridescorner.com

Weekly Image Galleries - <http://pridescorner.smugmug.com/>

Current Availability - <http://www.pridescorner.com/Availability>

Jeremy DeCarli
To: Wayne Rand

1 attachment View Open in brows
Wetland Plantings...High.pdf (385.7 KB)

Wayne,
See attached.
I heard from Matt yesterday. He is waiting pricing.
Thanks,

Jeremy DeCarli
Planning and Zoning Official
Town of East Hampton
20 East High Street
East Hampton, CT 06424
T: 860-267-9601 x 318
E: jdecarli@easthamptonct.gov

From: Wayne Rand [mailto:waynerand@ce]
Sent: Wednesday, June 14, 2017 10:39 AM
To: DeCarli, Jeremy
Subject: RE: 195 / 201 West High Wetland

Jeremy,
Good Morning, Please forward me if it's

Thank you
Wayne Rand
(860) 267-6623

Details

Name Wetland Plantings - 201 West High.pdf
Size 386 KB

Modified

Table 2: MITIGATION PLANTING MATERIALS, WEST HIGH STREET, EAST HAMPTON, CT

Zone	Plant Name	Code	Shade/ Sun	HL	Basin Bottom and Slope	Restoration Area A	Enhancement Area C	Restoration Area B
Low Shrubs								
	<i>Cornus racemosa</i>	CR	SH/SU	2'-3'	5			2
Deciduous Wetland shrubs, Medium-tall								
	<i>Aronia melanocarpa</i>	AM	SH/SU	3'-4'		10	5	
	<i>Clethra alnifolia</i>	CA	SH/SU	3'-4'		6	10	
	<i>Cornus amomum</i>	CAM	SU	3'-4'		4	5	
	<i>Ilex verticillata</i>	IV	SH/SU	3'-4'	3		17	3
	<i>Sambucus canadensis</i>	SC	SU	3'-4'		3		
	<i>Vaccinium corymbosum</i>	VC	SH/SU	3'-4'		6	18	
Tall Shrubs								
	<i>Lindera benzoin</i>	LB	SH				21	
	<i>Viburnum cassinoides</i>	Vca	SH/SU	3'-4'			35	4
	<i>Viburnum dentatum</i>	VD	SH/SU	3'-4'	5			
	<i>Viburnum lentago</i>	VL	SH/SU	3'-4'		4	14	
Low trees								
	<i>Ametanier canadensis</i>	AC	SH/SU	3'-4'	1	2		
	<i>Carpinus caroliniana</i>	CC	SH			2	1	
	<i>Juniperus virginiana</i>	JV	SU	3'-4'	3			
	<i>Prunus virginiana</i>	PV	SU	3'-4'	3			
	<i>Salix babbit</i>	SB	SH/SU	3'-4'		2		7
	<i>Salix discolor</i>	SS	SU	3'-4'		8		
Tall trees								
	<i>Fraxinus pennsylvanica</i>	FP	SH/SU	4'-8'	1	2		
	<i>Nyssa sylvatica</i>	NS	SH/SU	4'-8'		3		
	<i>Pinus strobus</i>	PS	SU	4'-8'	1	1		
	<i>Quercus palustris</i>	QP	SH/SU	4'-8'	2	3		2
GRAND TOTAL					24	56	126	20
Vines								
	<i>Parthenocissus quinquefolia</i>	PQ	SH/SU	plugs		3		
Herbs								
	<i>Osmunda cinnamomea</i>	OC	SH/SU	plugs		10	10	

Sources: Summer Hill Nurseries, Madison, Connecticut 06443 203.421.3055
New England Wetland Plants, Inc., 820 West Street, Amherst, Mass. 01002 413.648.0000 (orders toll)

4-11
473.5 to
474.0
0

NOTES (FOR TABLE 2):

- Excavate 4-10 inches of fill or soil from Restoration Areas "A" and "B." Very few trees remain in these areas, but take care when excavating around remaining trees. Leave fill mounds along major tree roots. Elsewhere leave two 15 to 25 sf elongated mounds per 400 sf, and plant with Zone B, C tree and/or shrubs. Spread fallen logs and branches (5% cover) over mitigation areas, if not already present.
- Wetland scientist shall monitor hydrology after grading, and may call for plan adjustments prior to planting. Locations of shrub clusters may be adjusted based on observations.
- Remove invasive shrubs and vines from Wetland Enhancement Area "C" Hand pull small plants. For larger plants use the "cut and paint" method, applying 4% triclopyr to cut stems within ten minutes of cutting. Herbicide may be applied in May and June or in August and September. Dispose of removed invasive material outside mitigation areas and wetlands.
- Spread shredded leaf litter - two inches thick over all mitigation areas, taking care not to mulch out existing wildflowers and ferns. Plant groupings of ferns in late spring to early summer or in

I CONNRS I HAVE REVIEWED THE BEST OF MY KNOWLEDGE AND BELIEVE THAT THIS PLAN IS SUBSTANTIALLY CORRECT.

AM ENGINEERING INC.

Wayne,

See attached.

I heard from Matt yesterday. He is waiting to hear back from his GeoTech folks for some recommendations and pricing.

Thanks,

Jeremy DeCarli
Planning and Zoning Official
Town of East Hampton
20 East High Street
East Hampton, CT 06424
T: 860-267-9601 x 318
E: jdecarli@easthamptonct.gov

Matt Knonek
Clark Hill
Power

C Ficarelli@
Prides corner, conn

Carol
Pu

<< CONFIRMATION >>

PRIDES CORNER FARMS
122 Waterman Road
Lebanon, CT 06249

ORDER NO 00411038
PAGE 1
BATCH/LOAD CRMWL / 0

**Prides Corner Farms, Inc.
Prides Corner Farms, Inc.**

Phone: (860) 642-7535

Fax: (860) 642-4155

Web: www.pridescorner.com

S
O YDSALE
L YARD SALES - PCF
D prides wholesale yard
T LEBANON, CT 06249
O

S
HI YDSALE
P YARD SALES - PCF
T prides wholesale yard
O LEBANON, CT 06249

CUSTOMER PO # ORDER DATE REQ SHIP DATE ACT SHIP DATE SLS 1 SHIP VIA TERMS STOP #
CRMWL - West High 06/15/17 06/15/17 C03
SPECIAL INSTRUCTIONS Wayne Rand COD

Ordered	Shipped	Catalog	Description	Size	Net	Price	Ext Price
1	7	7 SHCO03	CORNUS RACEMOSA	724529129232	#3	\$18.90	\$132.30
2	15	15 SHARM03	ARONIA MELANOCARPA	724529138517	#3	\$13.50	\$202.50
3	16	16 SHCS03	CLETHRA ALNIFOLIA	724529206292	#3	\$17.50	\$280.00
4	9	9 SHCOA03	CORNUS AMOMUM	724529229987	#3	\$18.00	\$162.00
5	23	23 SHIVW03	ILEX VERT. 'WINTER RED'	724529207572	#3	\$18.50	\$425.50
6	3	3 PWSHSBBL03	SAMBUCUS NIGRA 'BLACK LACE'	724529393329	#3	\$20.57	\$61.71
7	21	21 ABSHLBS01	LINDERA BENZOIN	724529382156	#1	\$10.25	\$215.25
8	5	5 SHVICL07	VIBURNUM DENTATUM 'CHICAGO LUSTRE'	724529532551	#7	\$47.25	\$236.25
9	39	39 SHVITW03	VIBURNUM TRILOBUM 'WENTWORTH'	724529208951	#3	\$17.50	\$682.50
10	18	18 SHVIL05	VIBURNUM LENTAGO	724529655076	#5	\$26.50	\$477.00
11	3	3 TAMRA05C	AMELANCHIER 'AUTUMN BRILLIANCE' -CL	724529596058	#5	\$38.50	\$115.50
12	3	3 TCARC"1.5	CARPINUS CAROLINIANUM	724529654475	1.5/1.	\$175.00	\$525.00
13	3	3 JNV"5	JUNIPERUS VIRGINIANA	724529211111	5/6"	\$130.00	\$390.00
14	8	8 SHSAL03	SALIX DISCOLOR	724529296774	#3	\$18.80	\$150.40
15	3	3 TNYS"2	NYSSA SYLVATICA	724529312153	2/2.5"	\$250.00	\$750.00
16	2	2 ENPNS"5	PINUS STROBUS	724529212217	5/6"	\$95.00	\$190.00
17	7	7 TQU"2	QUERCUS PALUSTRIS	724529212705	2/2.5"	\$225.00	\$1,575.00
18	8	8 ABVPAV01	PARTHENOCISSUS QUINQUEFOLIA	724529383443	#1	\$10.76	\$86.08
19	50	50 FNOC01	OSMUNDA CINNAMOMEA/CINNAMON FERN	724529205509	#1	\$6.70	\$335.00

NO ADDITIONAL DISCOUNT ON NET PRICING
to our current

and to deliver at

STATE OF CONNECTICUT

Nursery Inspection Cert. No. 600. This is to certify that the nursery stock of PRIDES CORNER FARMS INC. LEBANON, CT has been inspected and found apparently free from dangerously injurious insects and plant diseases.
DR. LOUIS MAGNARELLI - State Entomologist.
month (18% per

days of receipt of

merchandise.

Please review this copy of your order to verify the correct plant quantities and sizes. This order is subject price-list at time of shipment. This order is your authorization for us to reserve the nursery stock for you the time specified prior to May 1st.

Signed _____

Please note terms stated above. Past due accounts will be subject to a service charge of 1-1/2% per annum). All claims must be made in writing on the Shipping Manifest or in letter form to our office within 5 stock. Prides Corner Farms will at no time be responsible for more than the purchase price of the

<< CONFIRMATION >>

PRIDES CORNER FARMS

122 Waterman Road

Lebanon, CT 06249

Prides Corner Farms, Inc.
Prides Corner Farms, Inc.

ORDER NO 00411038
PAGE 2
BATCH/LOAD CRMWL / 0

Phone: (860) 642-7535

Fax: (860) 642-4155

Web: www.pridescorner.com

S
O YDSALE
L YARD SALES - PCF
D prides wholesale yard
T LEBANON, CT 06249
O

S
HI YDSALE
P YARD SALES - PCF
T prides wholesale yard
O LEBANON, CT 06249

CUSTOMER PO # ORDER DATE REQ SHIP DATE ACT SHIP DATE SLS 1 SHIP VIA TERMS STOP #
CRMWL - West High 06/15/17 06/15/17 C03 COD

SPECIAL INSTRUCTIONS
Wayne Rand

Ordered Shipped Catalog Description Size Net Price Ext Price

*** COD ***

Current order total is \$7,435.98 for this delivery. Order total is subject to additional charges for freight.
\$0.00
Sub-Total: \$6,991.99
Freight
Tax: \$443.99
Discount: \$0.00
Total Amount: \$7,435.98

NO ADDITIONAL DISCOUNT ON NET PRICING
to our current

and to deliver at
STATE OF CONNECTICUT

Nursery Inspection Cert. No. 600. This is to certify that the nursery stock of PRIDES CORNER FARMS INC. LEBANON, CT has been inspected and found apparently free from

Please review this copy of your order to verify the correct plant quantities and sizes. This order is subject price-list at time of shipment. This order is your authorization for us to reserve the nursery stock for you the time specified prior to May 1st.

Signed _____

JAMES SIPPERLY
CERTIFIED SOIL SCIENTIST
CONNECTICUT WETLAND SCIENTIST
401 SALEM TURNPIKE BOZRAH, CT 06334
860-334-7073
james.sipperly.js@gmail.com

Josh Wilson, Chairman
Inland Wetlands and Watercourses Agency
Town of East Hampton
1 Community Drive
East Hampton, CT 06424

March 2, 2024

RE: INLAND WETLAND SOILS AND WATERCOURSES INVESTIGATION AND
DELINEATION, WEST HIGH ENTERPRISES, 195 WEST HIGH STREET, EAST
HAMPTON, CT – APPLICATION # IW-24-001

Dear Mr. Wilson:

On February 10, 2024 I conducted a field site visitation to the property referenced above to re-flag an existing inland wetland and/or watercourse on the site. The purpose of the re-flagging was to determine if the inland wetland area had changed from the original delineation conducted by REMA Ecological in approximately 2012.

I sampled the soil throughout the area using a soil auger to a depth of 2-2.5 feet. Based on my field observations and using the guidelines established by the National Cooperative Soil Survey and as defined by the Connecticut General Statutes, I delineated the inland wetlands and watercourses.

I delineated the inland wetlands and watercourses using blue flagging numbered 1-33. They start near the brook on RT 66 and end beyond an existing detention basin and outfall. The wetlands are for the most part in the same location as shown on a site plan dated 1-10-12, prepared by Chatham Engineering.

In June there was an order list to Pride Corners Farm and emails from Wayne Rand and Jeremy DeCarli verifying that order. It is my understanding that shortly thereafter the plants were delivered and installed. It is also my understanding that invasive species were removed and the plantings were installed and inspected by George Logan of REMA Ecological Services.

I was recently asked to verify if in fact the plants were planted and survived. On March 3, 2024 I conducted a subsequent site visit to look at the plantings. I can assure you that the vegetation is primarily native species and I could notice uniform spacing of shrubs and trees identified as silky dogwood, choke cherry, white pine, in and around wetland area A.

The detention basin bottom and slopes were vegetated as well and species planted were dogwood, winterberry, pussy willow and pin oak. Cattails are also established throughout the bottom of the detention basin.

Mugwort which is an invasive species that is everywhere, has established it self along the top of the basin. This colonization has nothing to do with what was done at the site in the past, but a natural growth occurring all over uplands and wetland areas.

Also, there is a thick stand of Forsythia as well that is considered invasive. There is a fairly wide spread area of multi- flora rose that has established itself throughout the entire upland area transitioning into the wetland area at random locations. There is no need to remove these as these invasives have reached an equilibrium with the native species.

The detention basin is functioning well and is fully vegetated with native species. Sumac which is considered a native plant has spread around the edge of the detention basin and I wanted to bring it to your attention because it is becoming very prolific.

I have included photos of some of these areas I have just described.

If you have any questions and/or require further information, please contact me at the number referenced above.

Very truly yours,

James Sipperly

Certified Soil Scientist, Society of Soil Scientists of Southern New England
Connecticut Wetland Scientist, Connecticut Association of Wetland Scientists



①

pussy willows



(2)

cattails



③

white
pines



④ pussy willows
winter berry



⑤ Sweet pepper bush



⑥
trees along
detection basin



(7)

Black cherry



⑥
forsythia
and
silky dogwood
shrubs

WEST HIGH ENTERPRISES LLC
244 MIDDLETOWN AVE
EAST HAMPTON, CT 06424

51-7028/2111
16
CHECK NUMBER

6/10/2016

PAY TO THE ORDER OF Town of East Hampton

\$ **5,000.00

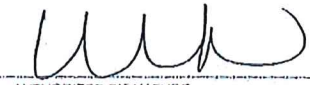
Five Thousand and 00/100*****

DOLLARS

Town of East Hampton
Sandi Wieleba - Town Clerk
20 East High Street
East Hampton, CT. 06424

MEMO

Wetlands Mitigation Bond 201 West High to comply



AUTHORIZED SIGNATURE

Details on Back. Security Features Included

WEST HIGH ENTERPRISES LLC

Town of East Hampton

6/10/2016

Wetlands Mitigation Bond 201 West High to comply

5,000.00

Wetlands Mitigation Bond 201 West High to com

5,000.00

paid 10/19/2022 per finance



Office of PLANNING & ZONING OFFICIAL
JEREMY DECARLI
jdecarli@easthamptonct.gov

May 24, 2015

Mr. W. Wayne Rand
Rand Construction
244 Middletown Ave.
East Hampton, CT 06424

Re: Wetlands Mitigation Bond, 201 West High Street – Map 12/Block 36/Lot 3

Dear Mr. Rand,

I am in receipt of an estimate prepared by REMA Ecological Services, LLC regarding the Wetlands Mitigation required on site in order to comply with IWWA Permit #IW2012-008-IW92422 issued by the East Hampton Inland Wetlands/Watercourses Agency. The estimate includes 226 native plantings required per the approved site plan.

The amount included in the estimate, \$5,000, appears to be appropriate. A Wetlands Mitigation Bond can be submitted to the Town for that amount at your convenience.

This bond will need to be maintained throughout the duration of the project.

Thank you,

A handwritten signature in black ink, appearing to read 'Jeremy DeCarli', is written over the 'Thank you,' text.

Jeremy DeCarli
Planning & Zoning Official